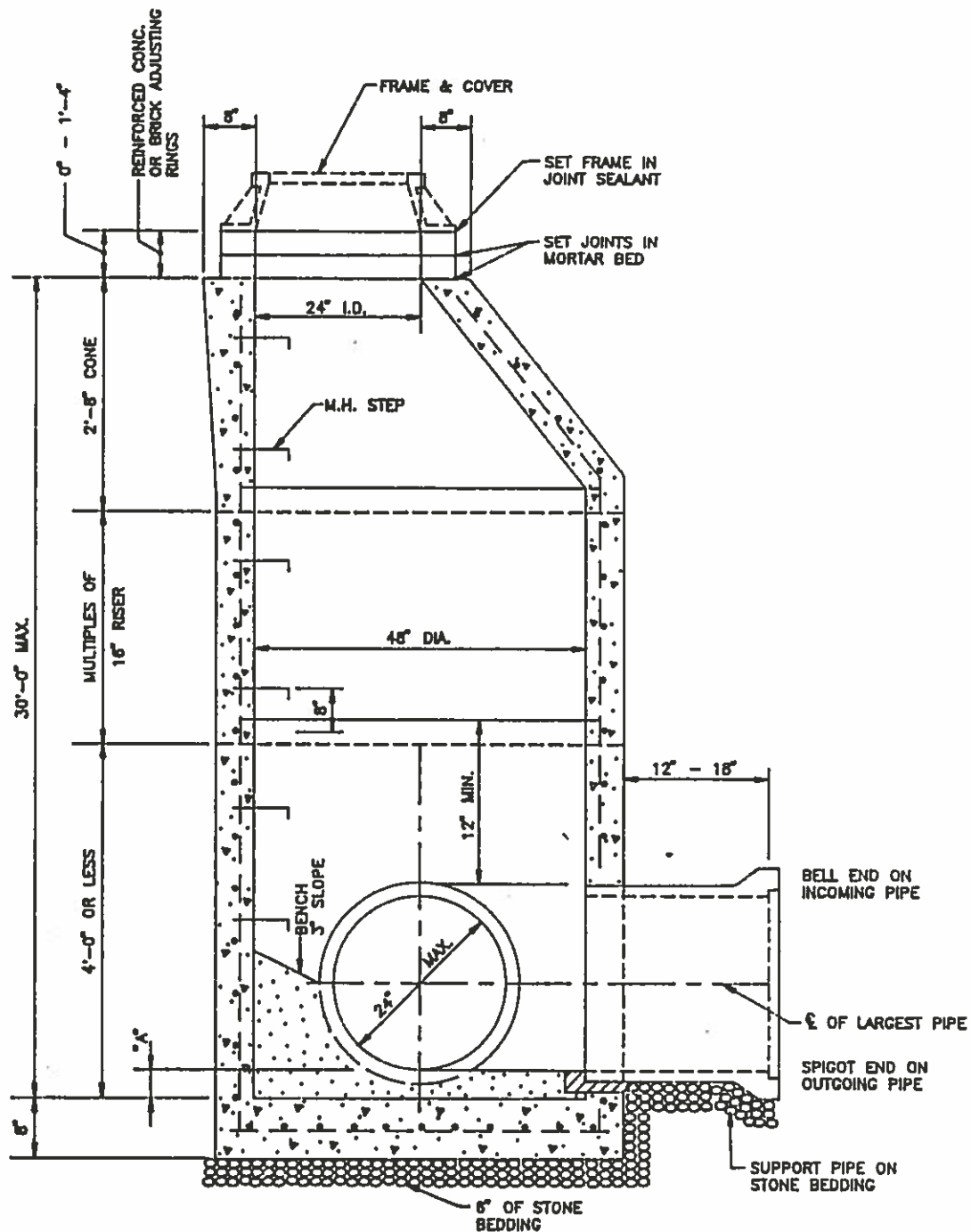


"A" DIMENSION EQUALS PIPE WALL THICKNESS PLUS 2" MINIMUM

REVISIONS  
FEB. 4, 1982

STANDARD PRECAST CONCRETE MANHOLE  
SEWERS 8" TO 15"

DRWG. NO.  
D-100



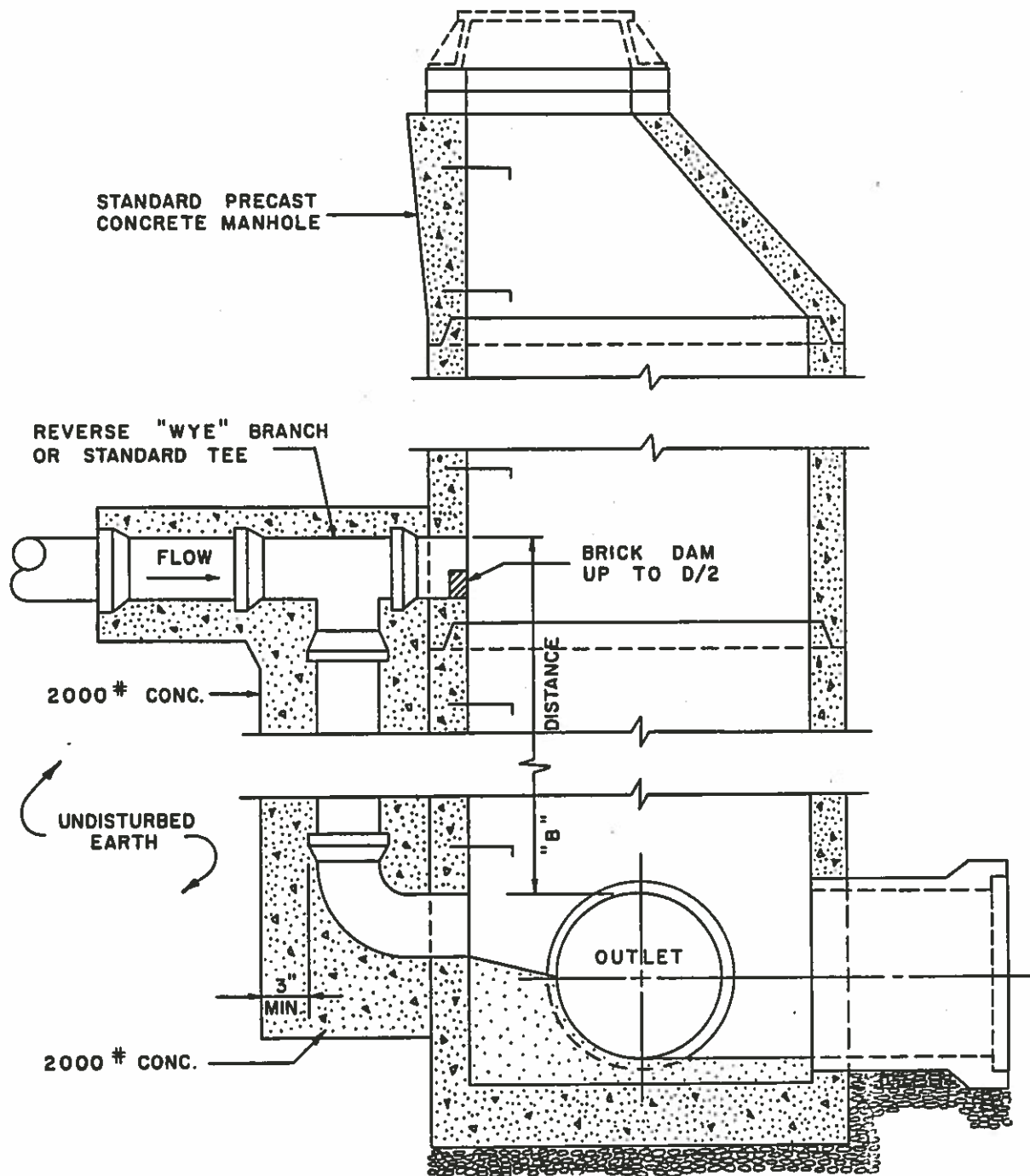
\*A\* DIMENSION EQUALS PIPE WALL THICKNESS PLUS 2" MINIMUM

REVISIONS

STANDARD PRECAST CONCRETE MANHOLE  
SEWERS 18", 21" AND 24"

DRAWING NO.

D-105



NOTE : CONCRETE ENCASEMENT MAY BE ELIMINATED IF D.I. PIPE AND FITTINGS ARE USED FOR DROP CONNECTION.

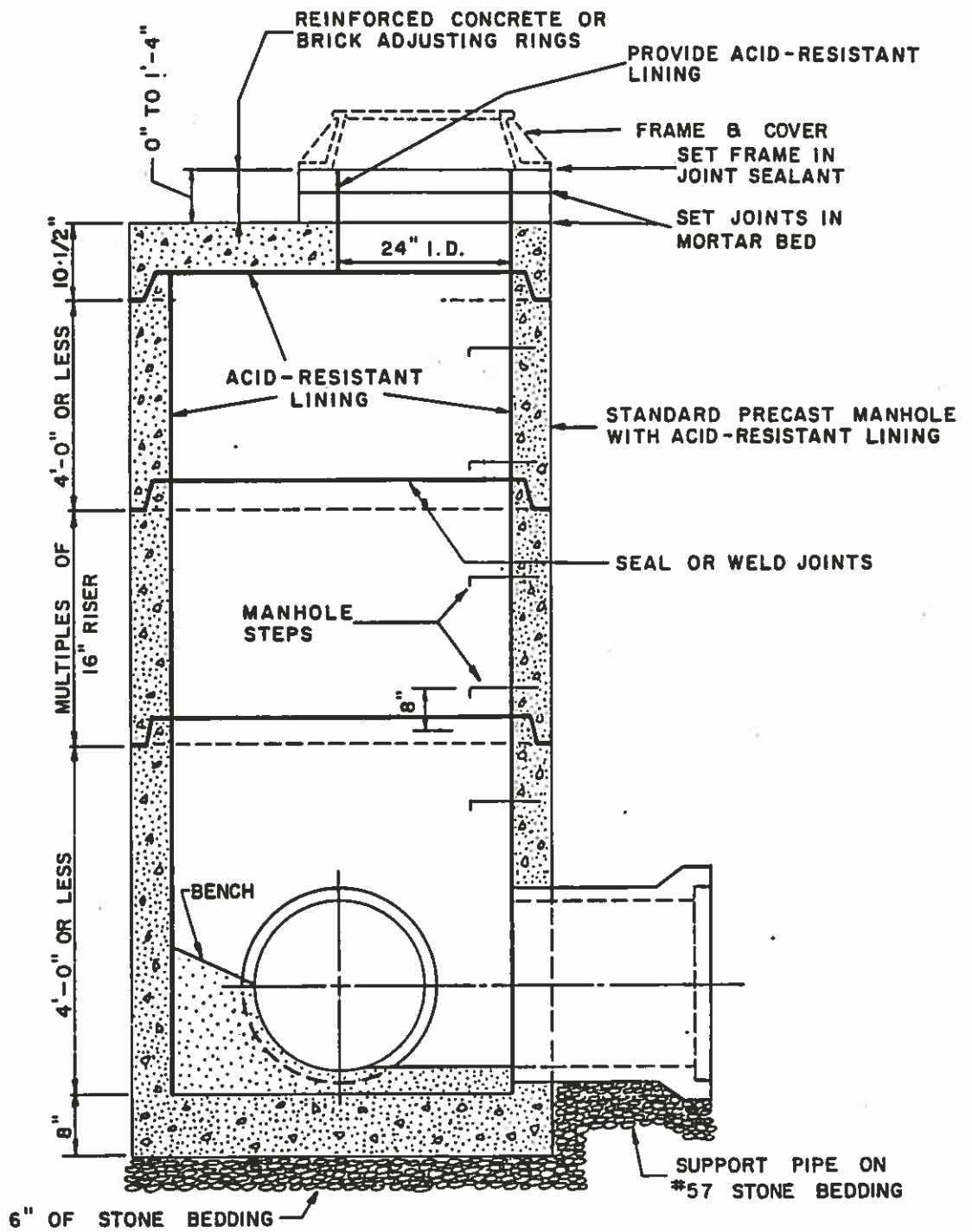
PAY DEPTH FOR EACH DROP CONNECTION SHALL BE "B" DISTANCE

REVISIONS

STANDARD DROP CONNECTION

DRWG. NO.

D-120



SEE DRAWING OF "STANDARD PRECAST CONCRETE MANHOLE" FOR ADDITIONAL MANHOLE DETAILS.

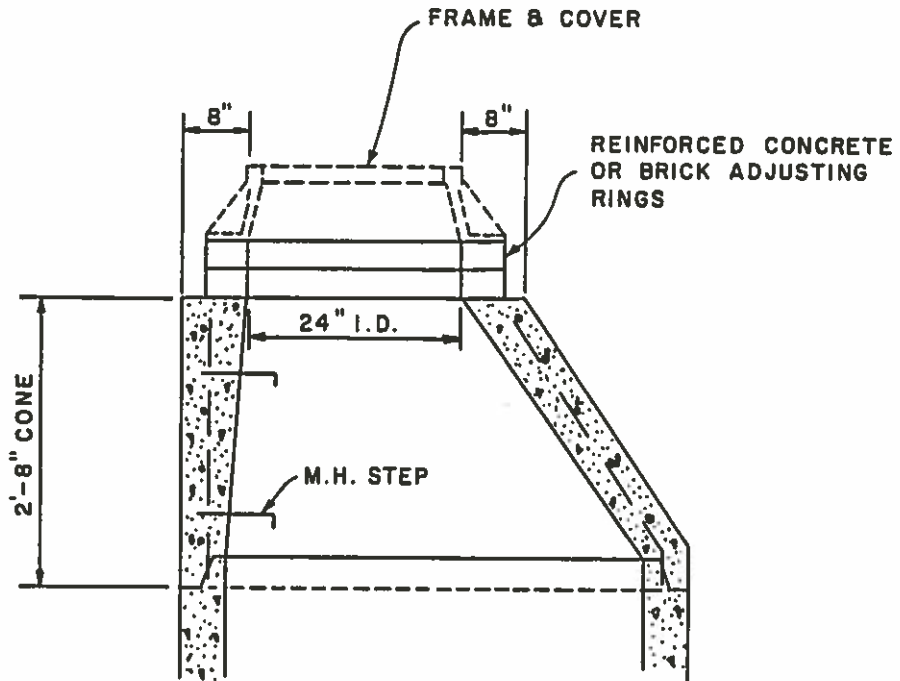
NOTE: USE SULFATE RESISTANT CEMENT TO PREPARE MORTAR IN BUILDING INVERT AND BENCH

REVISIONS

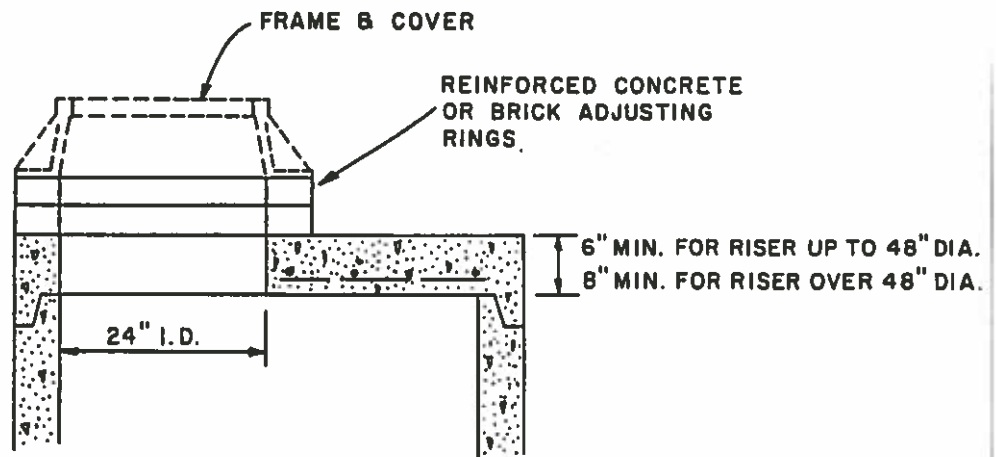
SPECIAL ACID-RESISTANT LINING  
ALL MANHOLES

DRWG NO.

D-125



ECCENTRIC CONE TOP



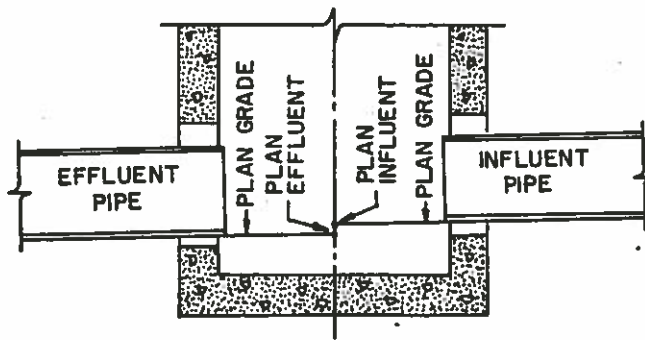
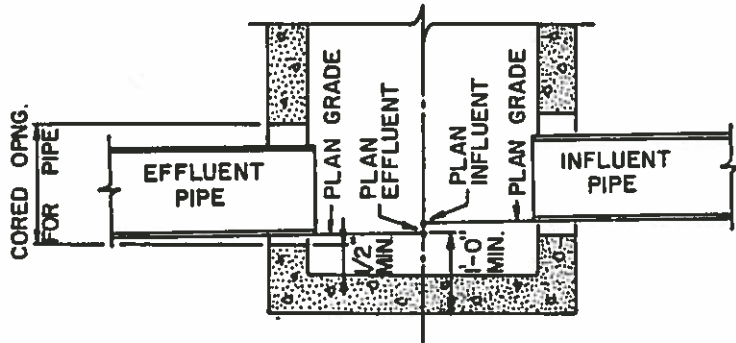
FLAT SLAB TOP

REVISIONS

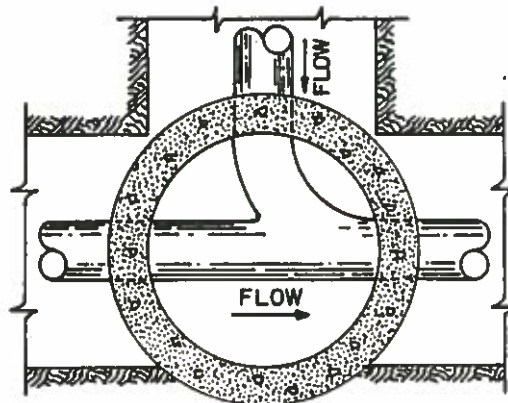
ALTERNATE MANHOLE TOP DETAILS

DRWG. NO.

D-130



NOTE : THE EFFLUENT ELEVATION SHOWN AT A MANHOLE IS ESTABLISHED FROM THE INFLUENT ELEVATION OF THE MANHOLE IMMEDIATELY DOWNSTREAM. ELEVATIONS SHOWN APPLY AT THE  $\odot$  OF MANHOLES & ARE BASED ON THE HORIZONTAL DISTANCE,  $\odot$  TO  $\odot$  OF M.H. USING PERCENT OF GRADE INDICATED.



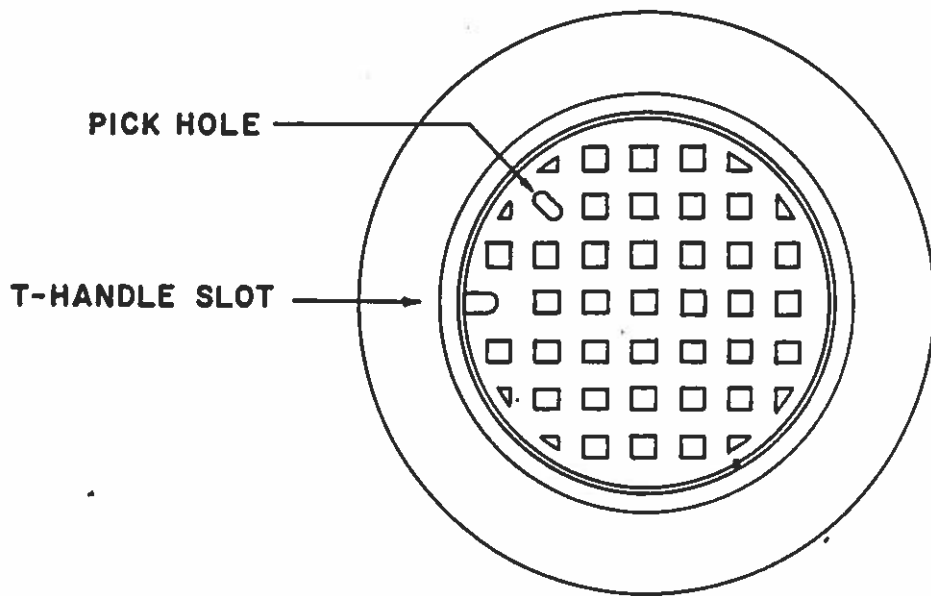
PLAN INVERT

REVISIONS

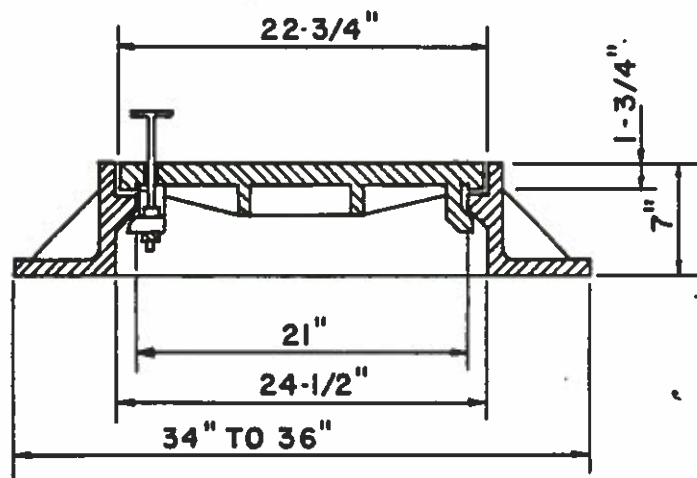
STANDARD INVERT DETAILS

DRWG. NO.  
D-135





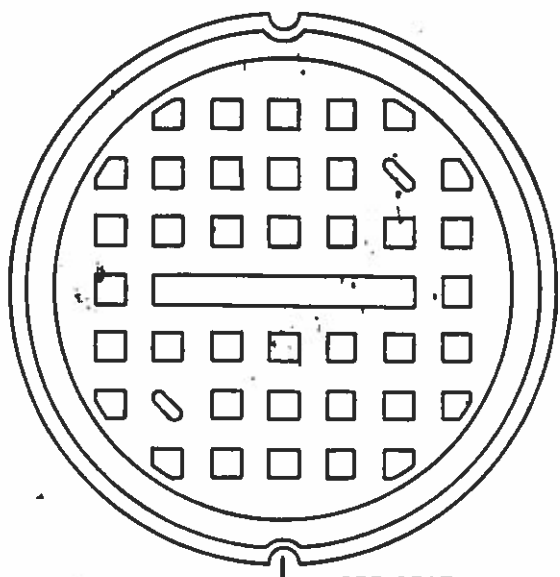
"T" HANDLE REMOVABLE  
ONLY WHEN COVER IS  
LOCKED



MIN.	WEIGHTS	
FRAME	Lbs	
COVER	Lbs	
TOTAL	405	Lbs

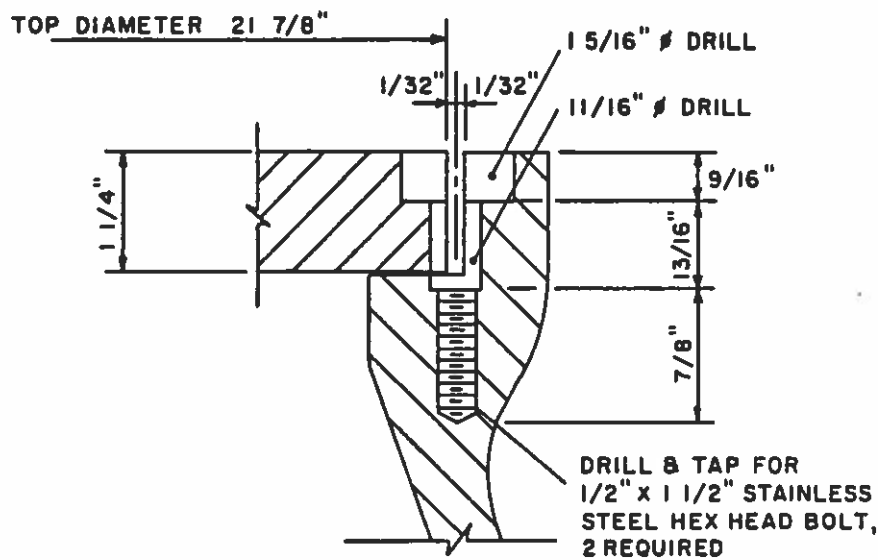
REVISIONS	VANDALPROOF MANHOLE FRAME & COVER	DRWG. NO. D-145
-----------	-----------------------------------	--------------------





COVER

NOTES:  
 1. VANDALPROOF MANHOLE FRAME & COVER SHALL BE SAME AS "STANDARD MANHOLE FRAME & COVER"



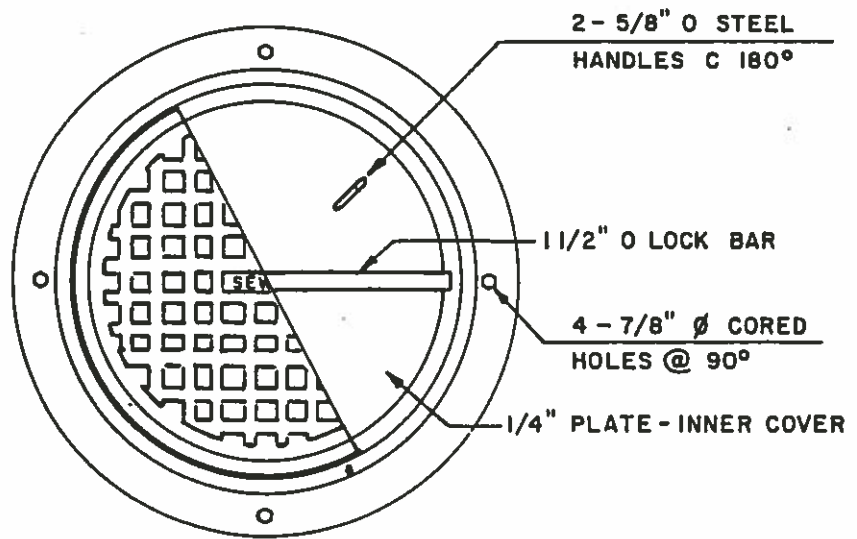
SECTION THROUGH BOLT

REVISIONS

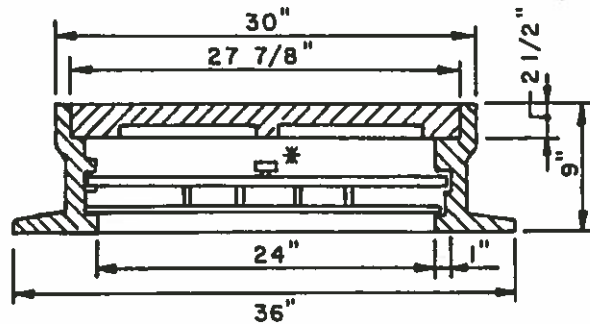
ALTERNATE  
 VANDALPROOF MANHOLE FRAME & COVER

DRWG. NO.

D-150



RECESSED PICK HOLE SHALL NOT EXTEND CLEAR THRU COVER.



\*BRONZE OR BRASS HEX. HEAD BOLT WITH 5/8" SHANK.

STEEL INNER COVER HANDLES & LOCK BAR.

1/4" x 1" CONTINUOUS NEOPRENE GASKET BETWEEN INNER COVER & FRAME.

FRAME SHALL BE SET IN SEALANT & BOLTED THRU TO THE MANHOLE CONE SECTION WITH 4-3/4" ANCHOR BOLTS. BOLTS SHALL BE SIMILAR TO PHILLIPS DRILL CO. NO. S-58

MIN. WEIGHTS

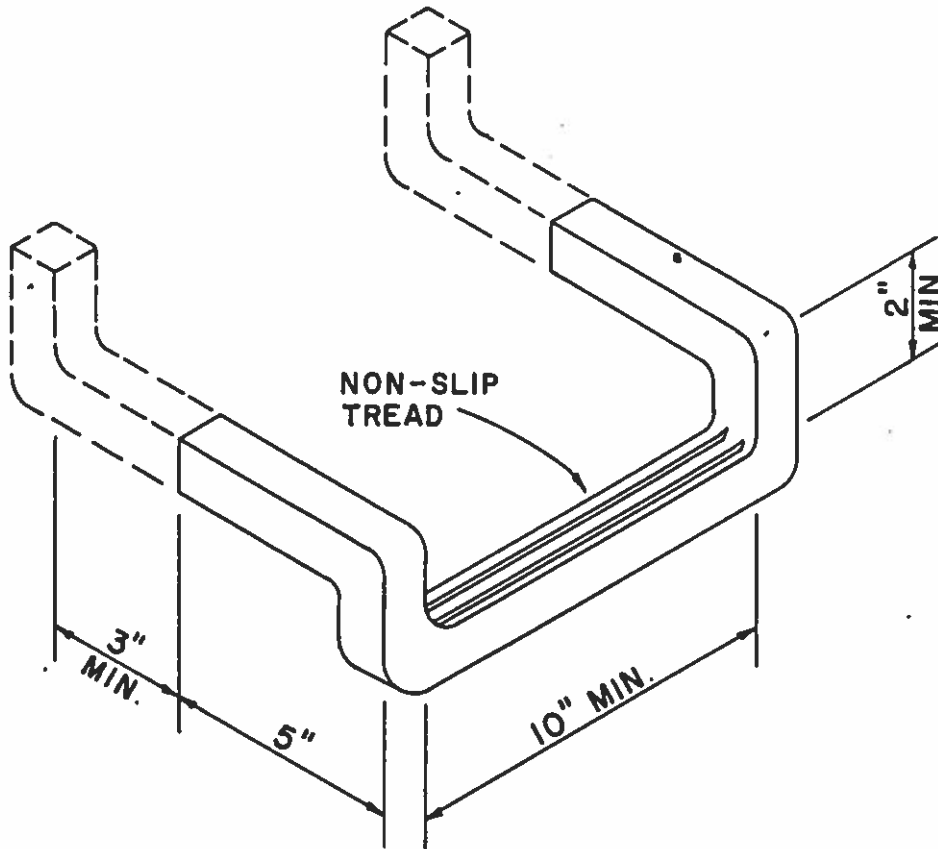
FRAME	295 LBS.
COVER	230 LBS.
INNER COVER	46 LBS.
TOTAL	571 LBS.

REVISIONS

WATERTIGHT MANHOLE FRAME & COVER

DRWG. NO.

D-155



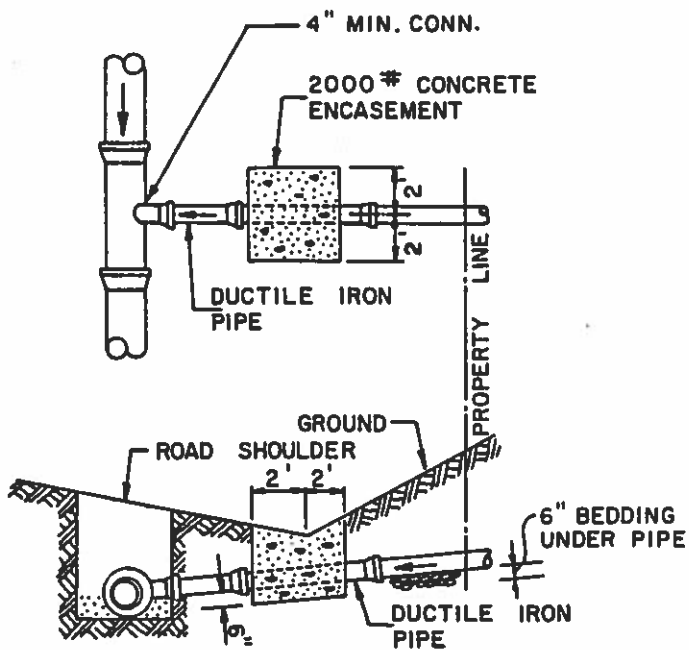
**NOTE: MANHOLE STEPS SHALL CONFORM TO O.S.H.A. STANDARDS AND SHALL BE SET 16" O.C. VERTICALLY.**

REVISIONS

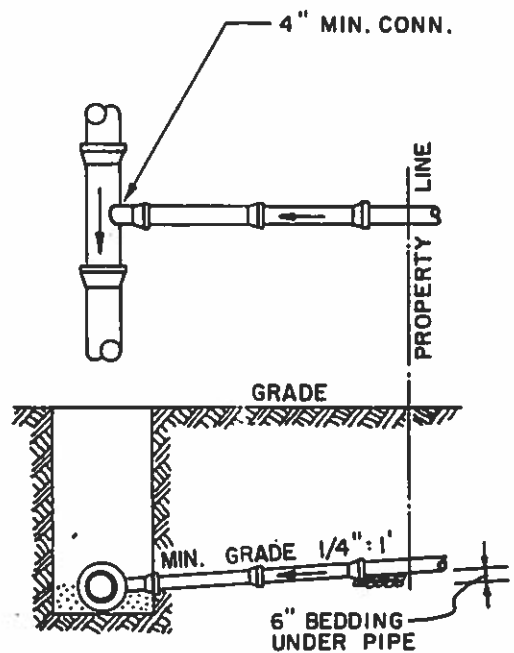
**STANDARD MANHOLE STEP**

DRWG. NO.

**D-160**

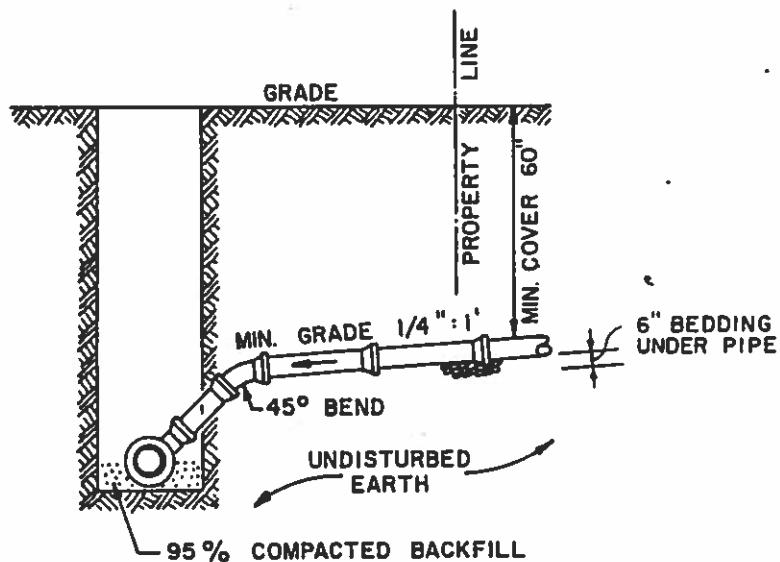


CONCRETE DITCH APRON  
A



BRANCH HOUSE CONNECTION  
B

NOTE: 1/8":1' GRADE MAY BE USED WITH A C.O. AT THE PROPERTY LINE. USING D.I. SERVICE PIPE.



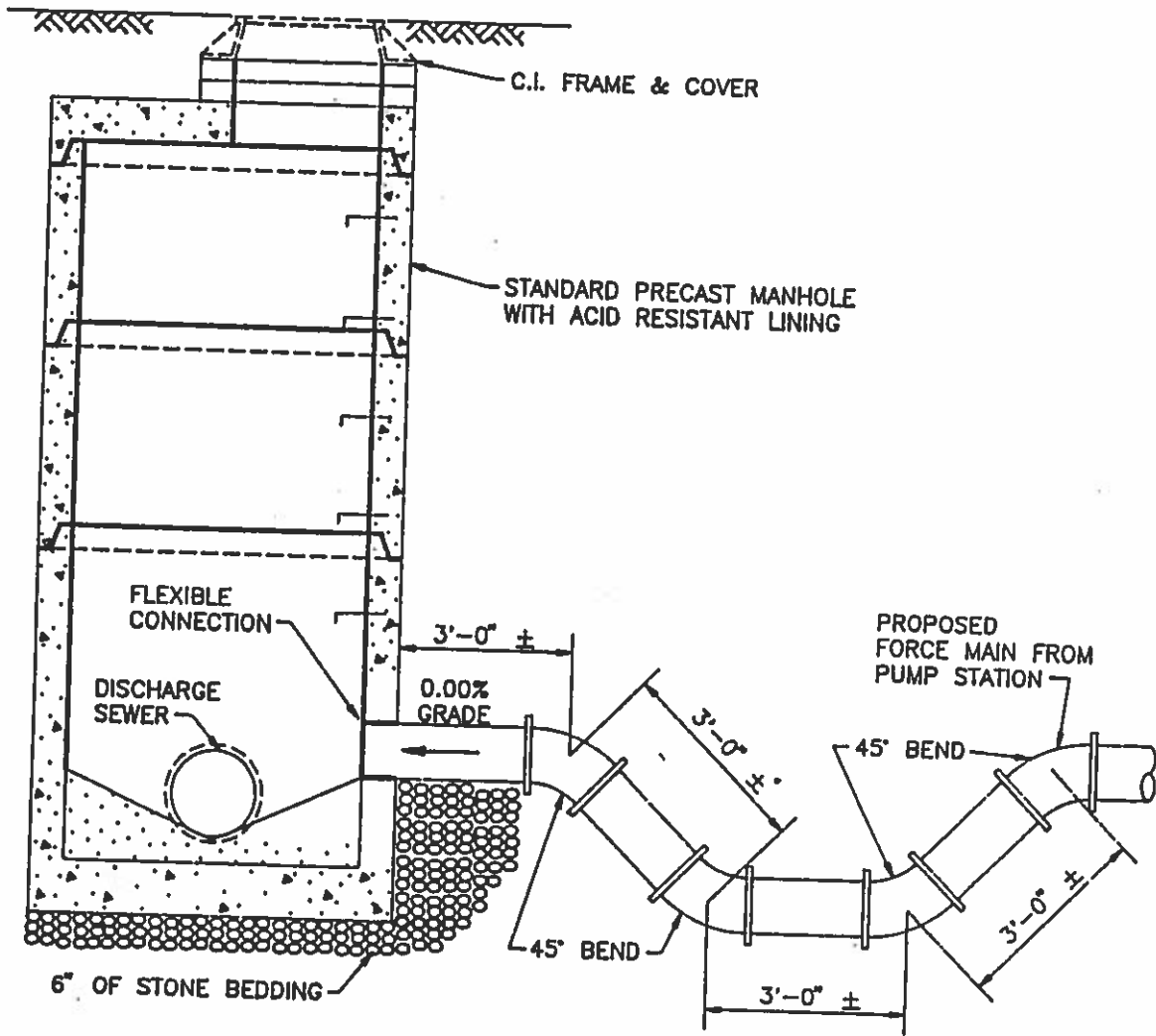
"TEE" BRANCH CONNECTION W/45° BEND  
C

REVISIONS

TYPICAL HOUSE CONNECTION DETAILS

DRWG. NO.

D-165

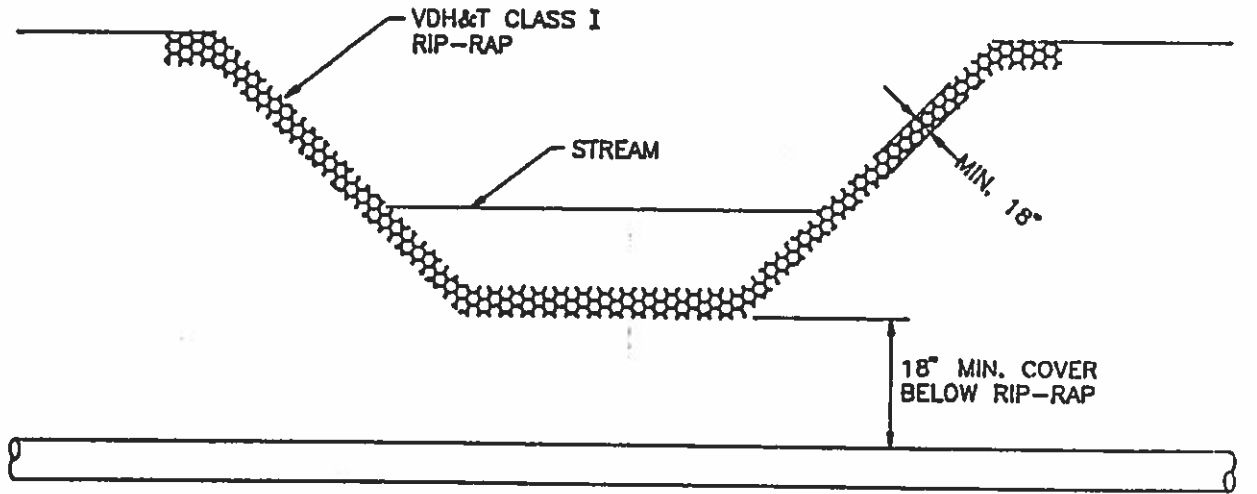
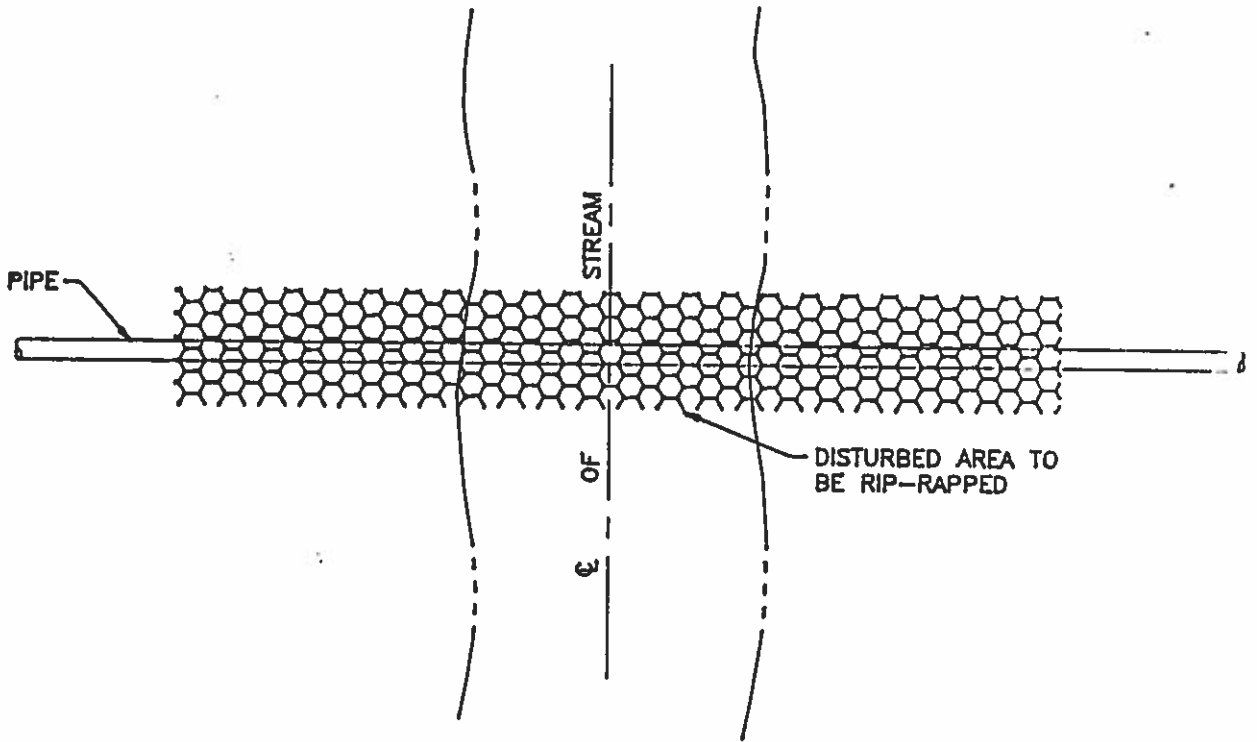


REVISIONS

FORCE MAIN TERMINATION  
AT MANHOLE

DRAWING NO.

D-166



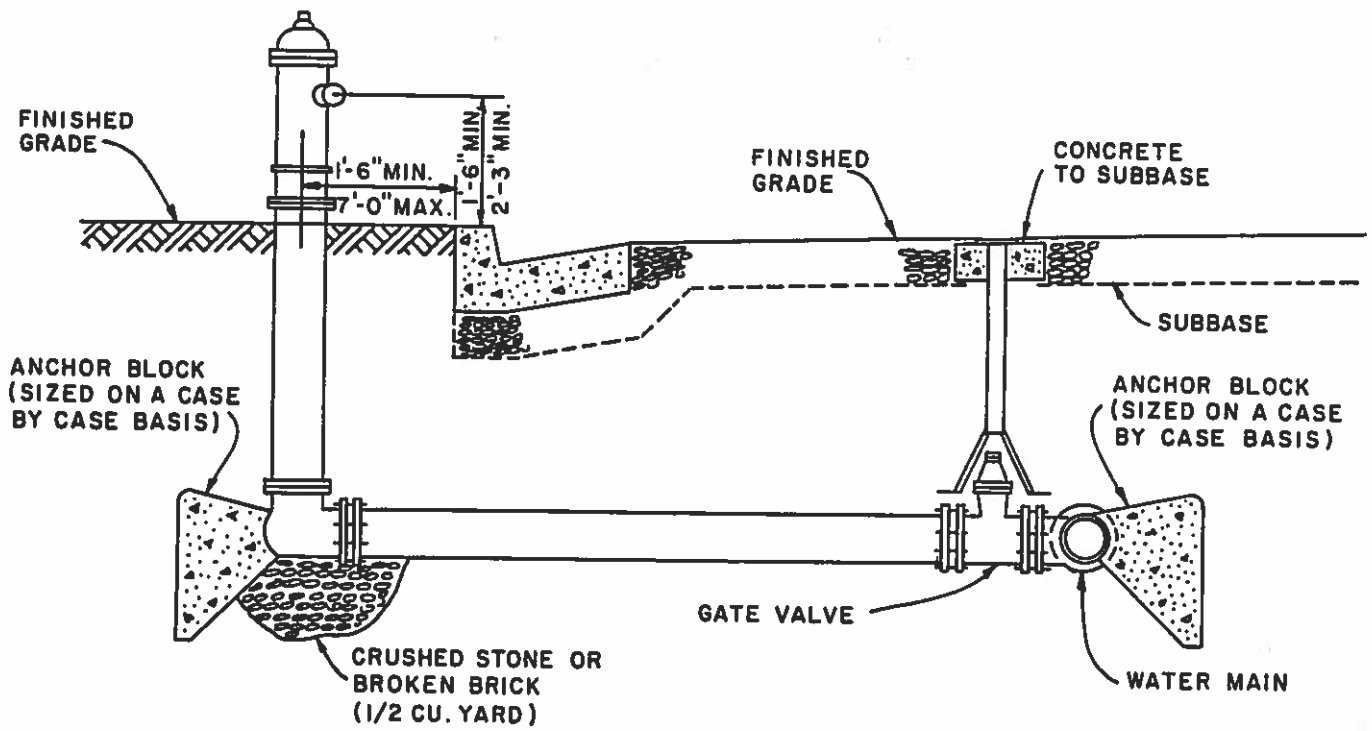
DUCTILE IRON PIPE  
OR  
STANDARD PIPE WITH CONCRETE ENCASEMENT  
(ENCASEMENT TO EXTEND MIN. OF 5 FEET  
EACH SIDE OF STREAM BANK)

REVISIONS

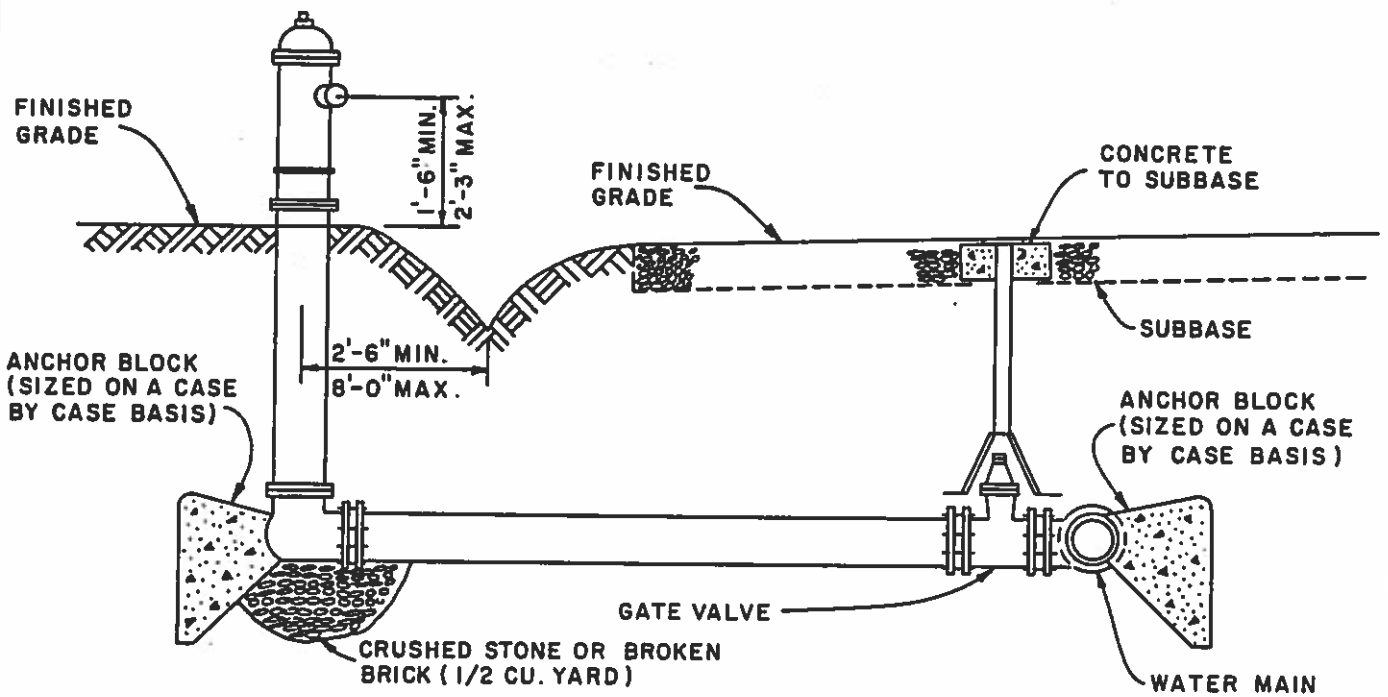
PIPE CROSSING AT STREAM

DRAWING NO

D-167



### CURB & GUTTER



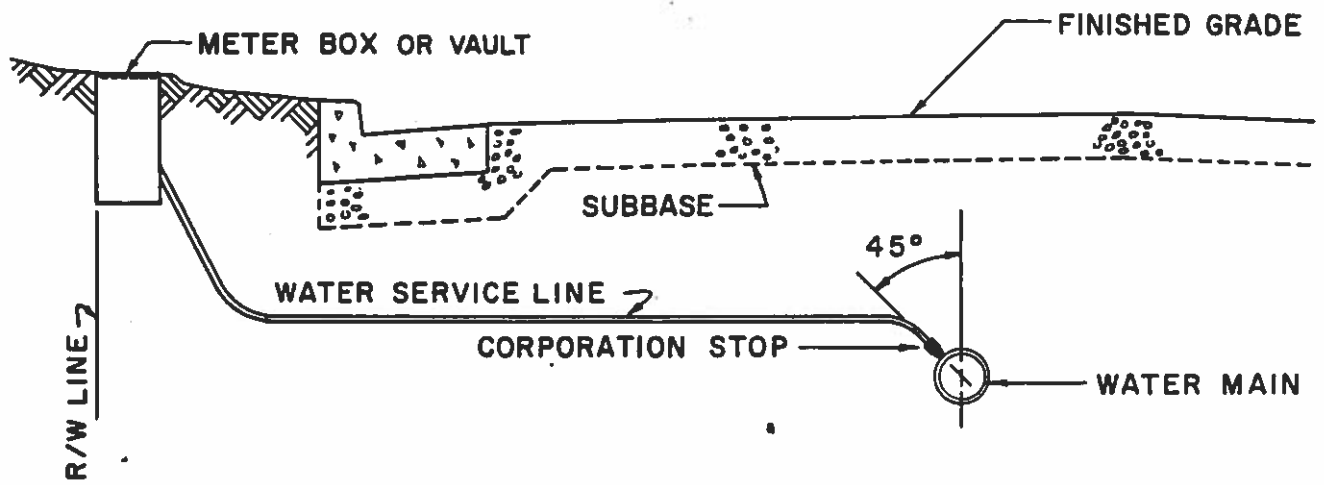
### DITCH

REVISIONS

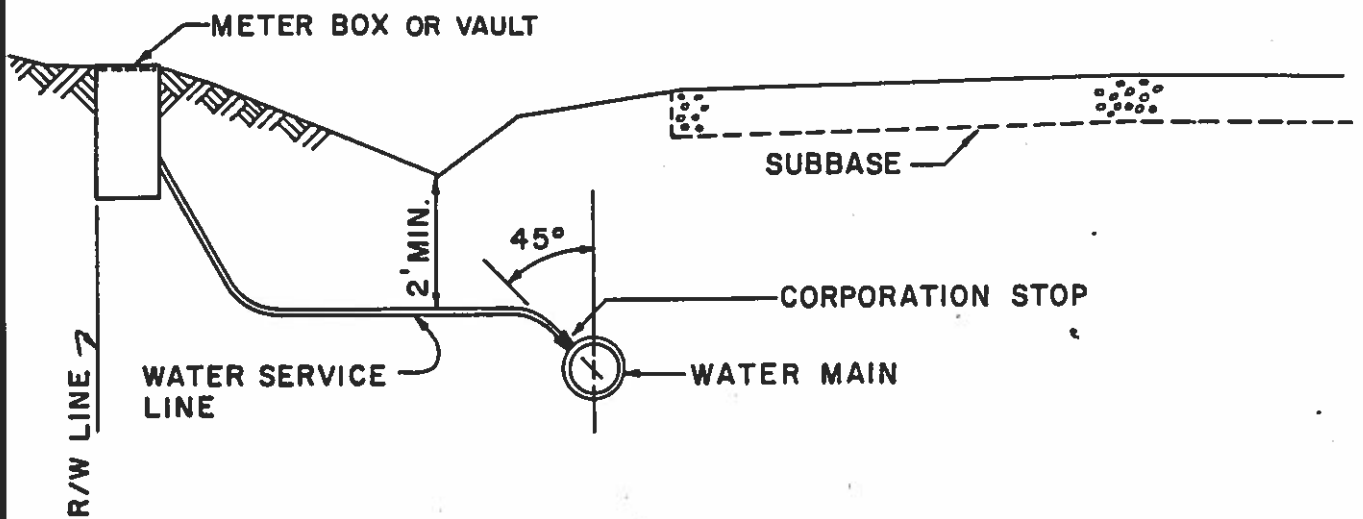
TYPICAL FIRE HYDRANT DETAIL

DRWG. NO.

D-200



### CURB & GUTTER



### DITCH

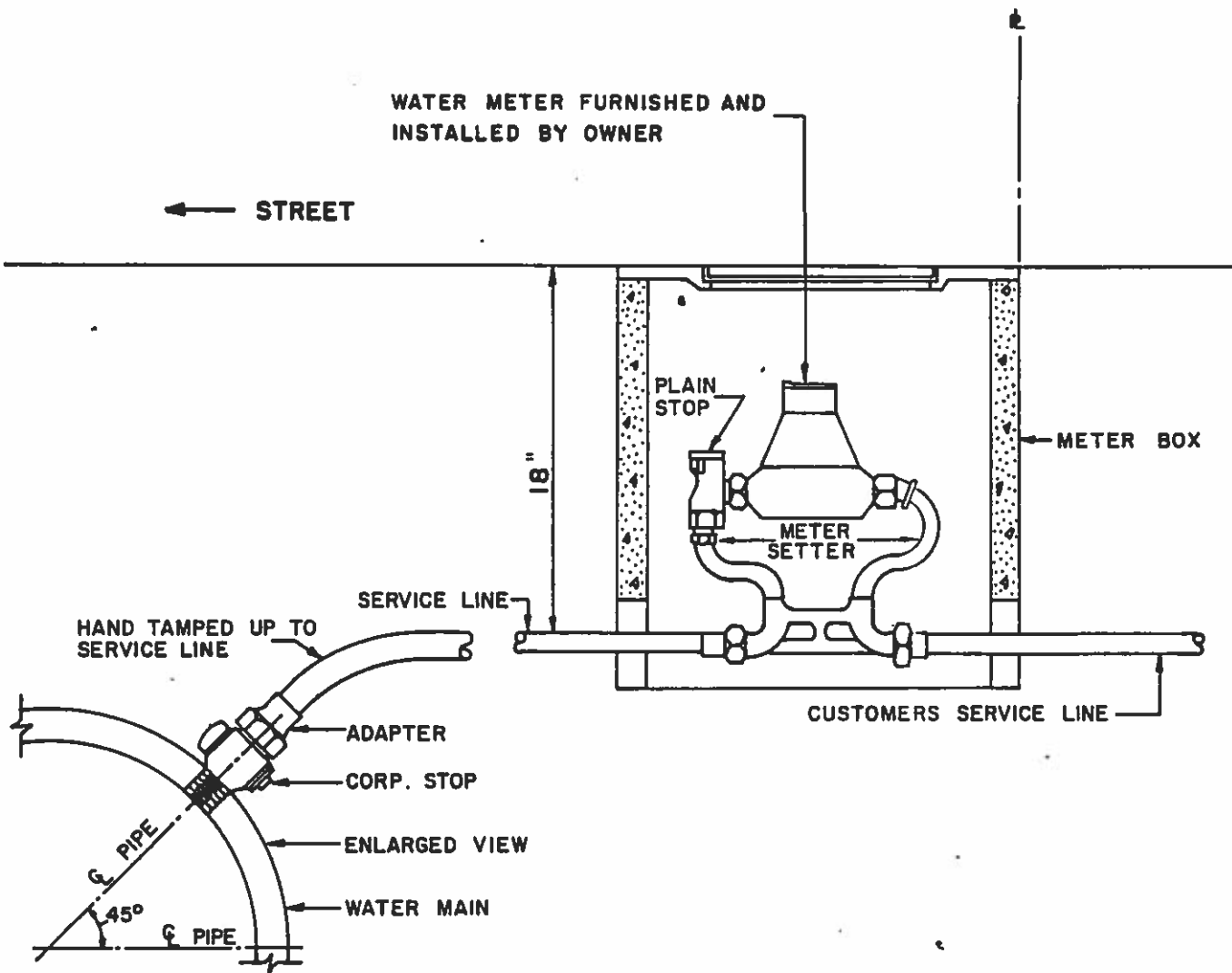
REVISIONS

METER INSTALLATION DETAILS

DRWG. NO.

D-210

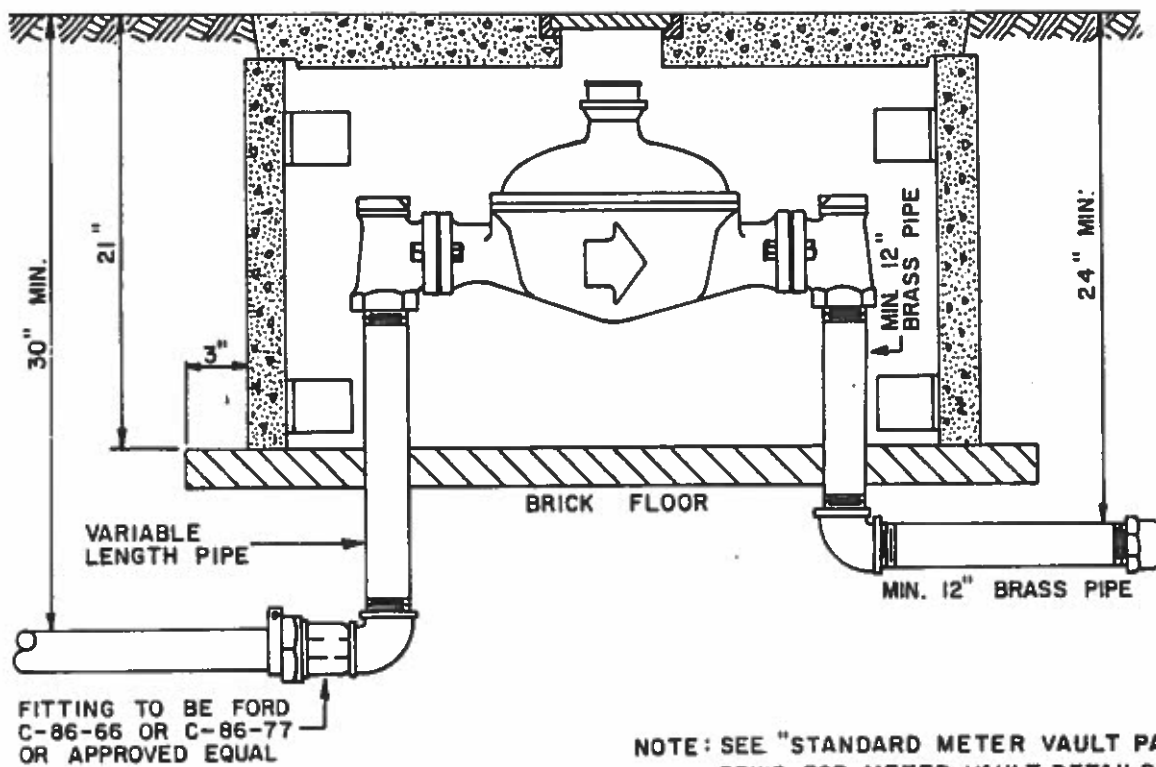
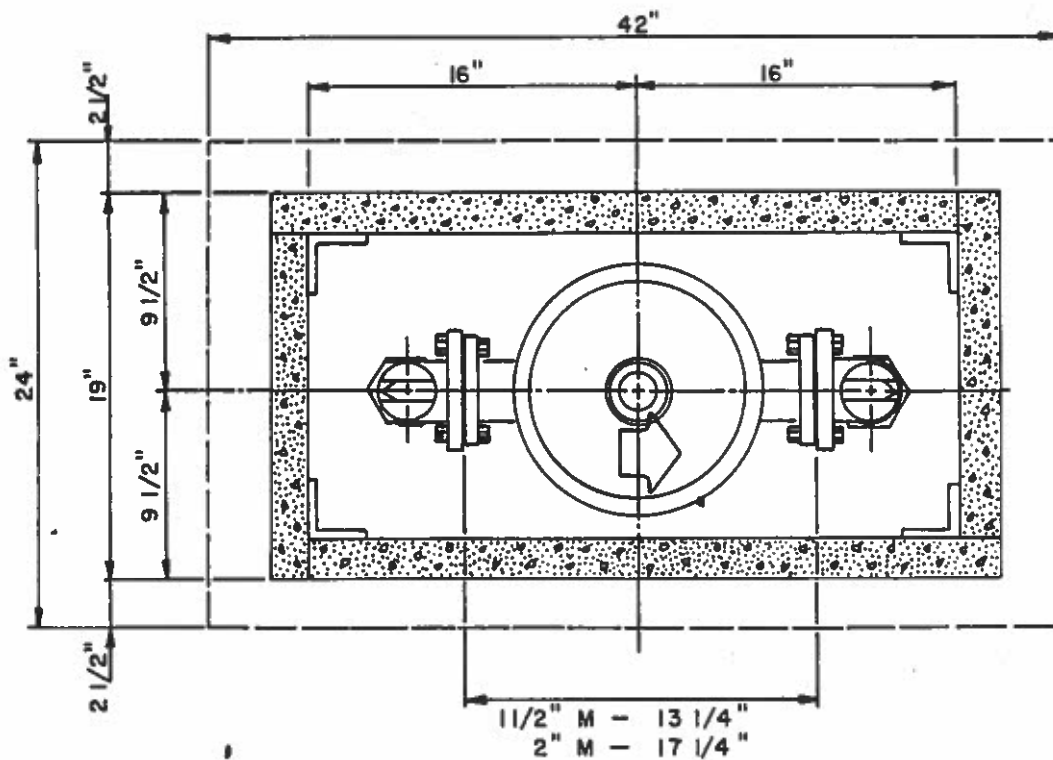




REVISIONS  
3/87

TYPICAL WATER METER CONNECTION  
FOR 3/4" & 1" SERVICES

DRWG. NO.  
D-215



REVISIONS

1 1/2" OR 2" DISC METER SETTINGS

DRWG. NO.

D-220

1 OF 2

MATERIAL FOR 1-1/2" DISC METER  
WITH 1-1/2" INLET AND 1-1/2" OUTLET

<u>QTY.</u>	<u>DESCRIPTION</u>
1	1-1/2" Disc Meter w/gaskets, bolts and nuts
2	1-1/2" Flanged angle valves
5	1-1/2" Brass Pipe (2 pcs. 12" long; 1 pc. variable length; Pipe to be cut and threaded by contractor)
2	1-1/2" brass elbows
1	#1 cover
2	Side A
2	Side B
8	Angle
16	Bolts, nuts, & washers; 1/2" x 3-1/2"
25	bricks
1	1-1/2" brass blind cap

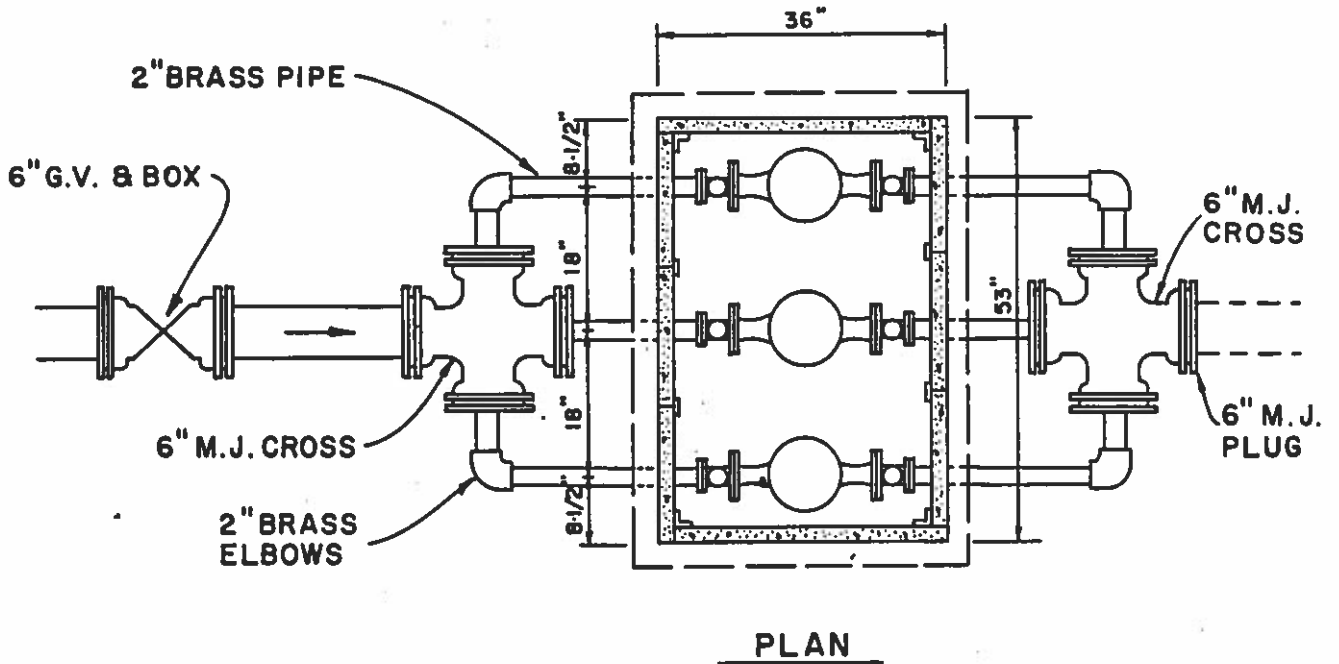
MATERIAL FOR 2" DISC METER  
WITH 2" INLET AND 2" OUTLET

<u>QTY.</u>	<u>DESCRIPTION</u>
1	2" Disc Meter w/gaskets, bolts and nuts
2	2" Flanged angle valves
5	2" Brass pipe (2 pcs. 12" long, 1 pc. variable length; Pipe to be cut and threaded by Contractor)
2	2" Brass elbows
1	#1 cover
2	Side A
2	Side B
8	Angle
16	Bolts, nuts & washers; 1/2" x 3-1/2"
25	Bricks
1	2" Brass blind cap

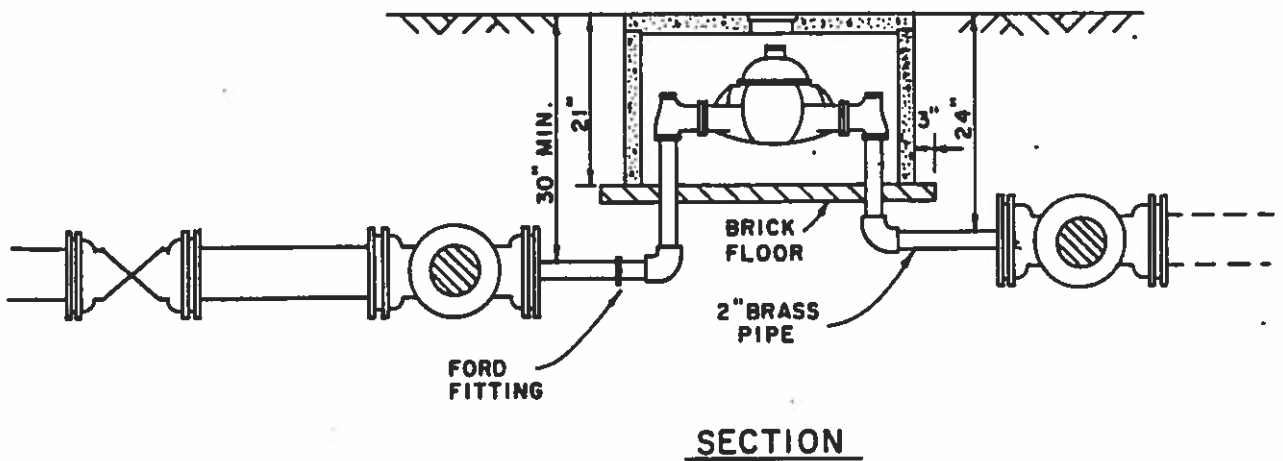
REVISIONS

MATERIALS LIST FOR  
1-1/2" OR 2" DISC METER SETTING

DRWG. NO.  
D-220  
2 OF 2



NOTE: SEE "STANDARD METER VAULT PARTS" DRAWING FOR METER VAULT DETAILS



REVISIONS

TRIPLE 2" METER SETTING

DRWG. NO.

D-230

1 OF 2

MATERIAL FOR TRIPLE 2" DISC METER  
WITH 6" INLET AND 6" OUTLET

<u>QTY.</u>	<u>DESCRIPTION</u>
3	2" Disc meters w/gaskets, bolts & nuts
6	2" Flanged angle valves
20	2" Brass pipe - 16 pieces of variable length; pipe to be cut & threaded by contractor
10	2" Brass elbows
3	2" Ford C-86-66 or C-86-67 or approved equal
2	6" M.J. crosses w/bolt & nuts
6	6" M.J. plugs drilled & tapped for 2"
1	6" G.V. & box
6	6" D.I. pipe
3	#1 covers
2	Side A
6	Side B
8	Angles
8	Plates
32	Bolts, nuts & washers; 1/2" x 3-1/2"
75	Bricks
1	6" M.J. plug

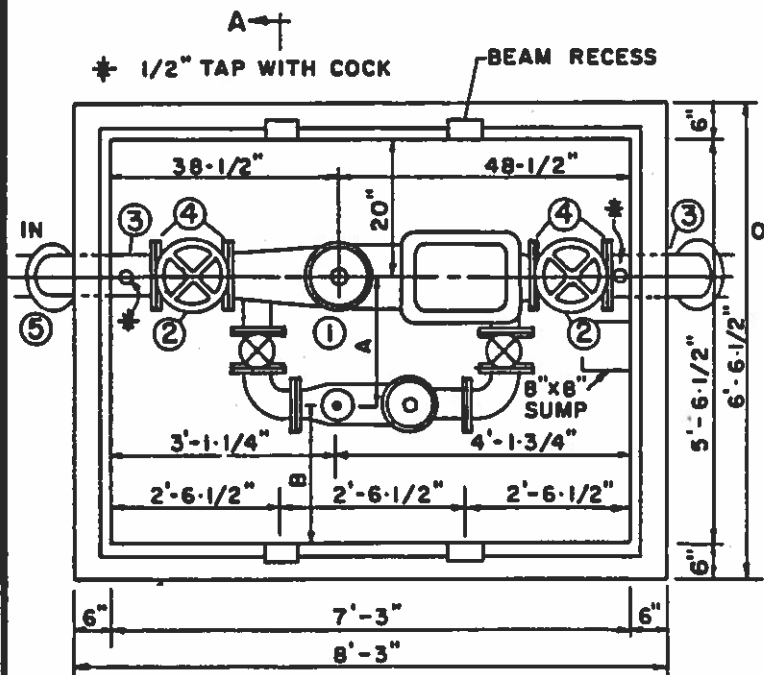
REVISIONS

MATERIALS LIST FOR  
 TRIPLE 2" METER SETTING

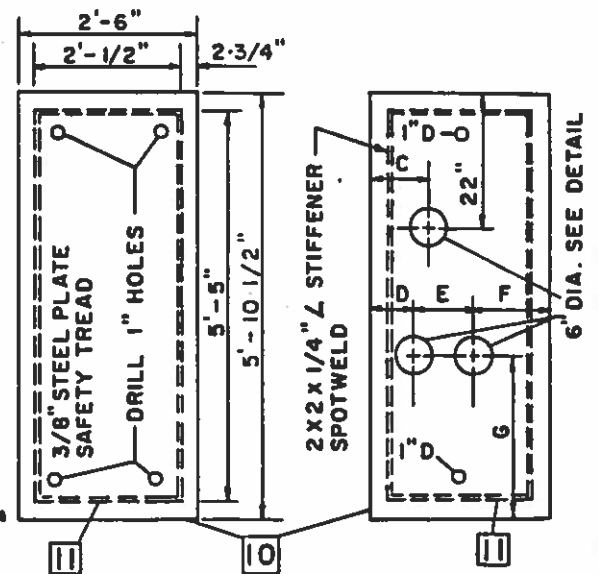
DRWG. NO.

D-230

2 OF 2

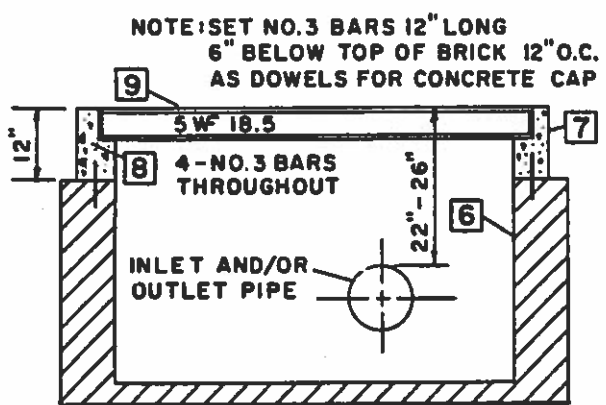


**A** PLAN  
SCALE 3/8" = 1'-0"

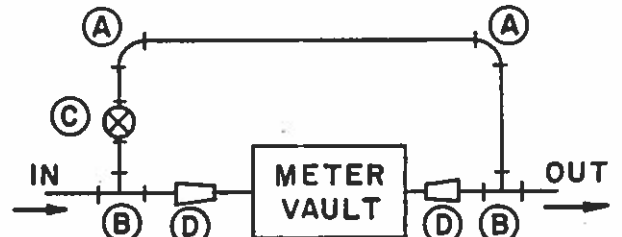


**COVER PLATE 1, 3**  
2 ENDS REQ'D  
SCALE 3/8" = 1'-0"

**COVER PLATE 2**  
1 CENTER REQ'D  
SCALE 3/8" = 1'-0"



**SECTION A-A**  
SCALE 3/8" = 1'-0"



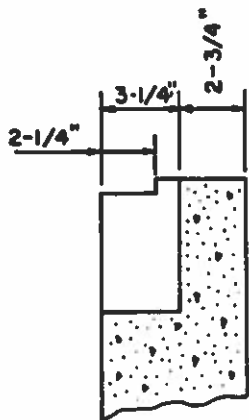
**METER BY-PASS DETAIL**

**NOTE:**  
INSTALL BY-PASS ON ALL F.M. METERS: 6" W/4" METER  
6" W/6" METER  
8" W/8" METER

- (A) - 2-90° BENDS
- (B) - 2-TEES
- (C) - 1 VALVE & VALVE BOX
- (D) - 2-6"x4" REDUCERS

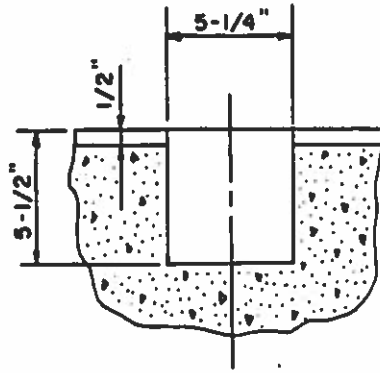
SIZE	A	B	C	D	E	F	G
4"	17-3/4"	28-3/4"	10"	8-3/4"	7-3/16"	14-1/16"	30-3/4"
6"	21-5/8"	24-7/8"	9-7/8"	7-3/8"	10"	12-5/8"	26-7/8"
8"	26-1/2"	20"	9-7/8"	8-5/8"	12"	9-3/8"	22"

**NOTE:** DIMENSIONS IN TABLE ARE TO BE USED ONLY WHEN CT METER IS ON THE RIGHT OF FLOW

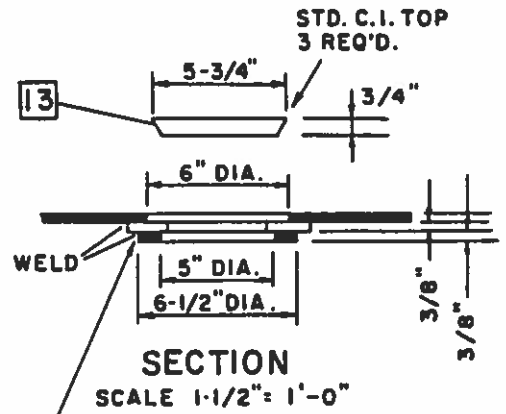


SECTION

BEAM RECESS  
SCALE 1-1/2" = 1'-0"

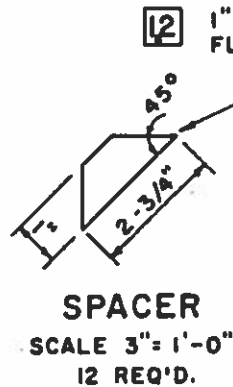


ELEVATION



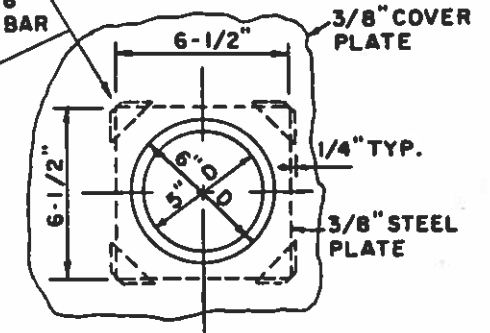
SECTION

SCALE 1-1/2" = 1'-0"



SPACER

SCALE 3" = 1'-0"  
12 REQ'D.



OPENING IN COVER & C.I. TOP SUPPORT

SCALE 1-1/2" = 1'-0"  
3 REQ'D

### MATERIALS LIST

- ① 1- 4", 6", OR 8" F.M. METER
- ② 2- 4", 6", OR 8" FLANGED GATE VALVES
- ③ 2- 4", 6", OR 8" FLANGED BY PLAIN NIPPLES
- ④ 4- 4", 6", OR 8" GASKETS
- ⑤ 2- 4", 6", OR 8" - 45° M.J. BENDS W/RETAINER GLANDS
- ⑥ 1000 BRICKS & MORTAR
- ⑦ 1/4 CUBIC YARD CLASS "A" CONCRETE
- ⑧ 150 NO. 3 REINFORCING BARS
- ⑨ 2- 5" W F BEAMS @ 18.5 lbs. x 6'-0-1/4"
- ⑩ 3- 2'-6" x 5'-10-1/2" x 3/8" SAFETY TREAD COVER PLATES
- ⑪ 42'-6" · 2" x 2" x 1/4" STEEL L
- ⑫ 2'-6" · 1" x 3/8" STEEL STRIP
- ⑬ 3- 5-3/4" x 3/4" CAST IRON TOPS

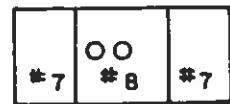
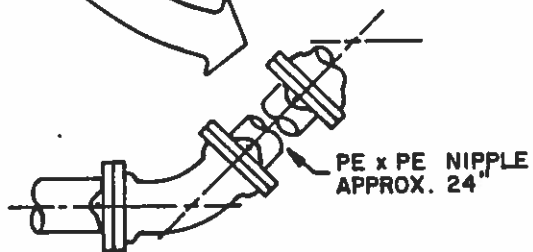
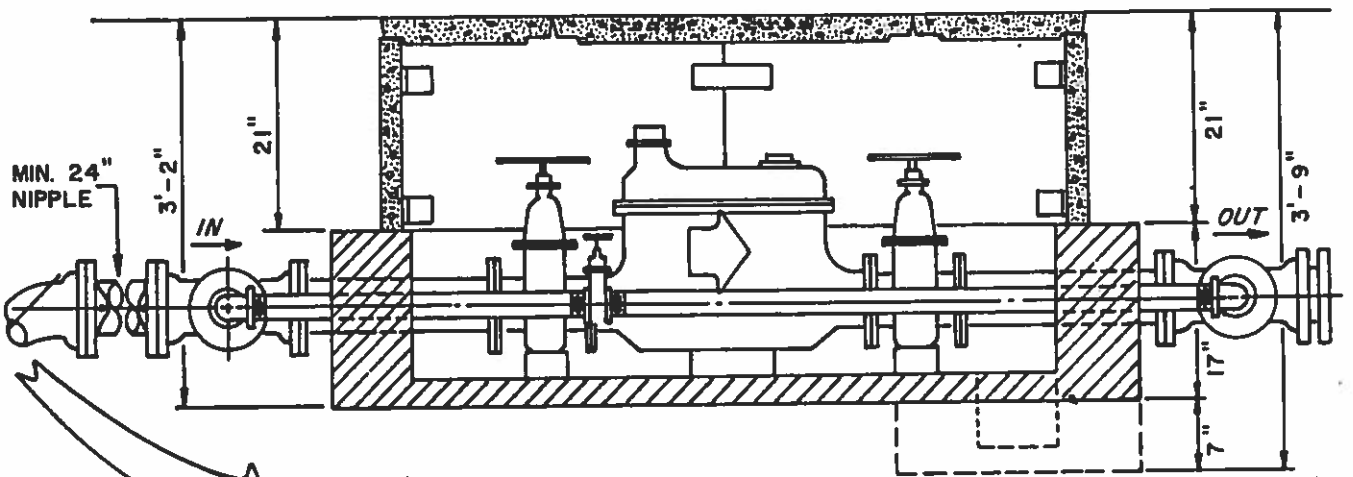
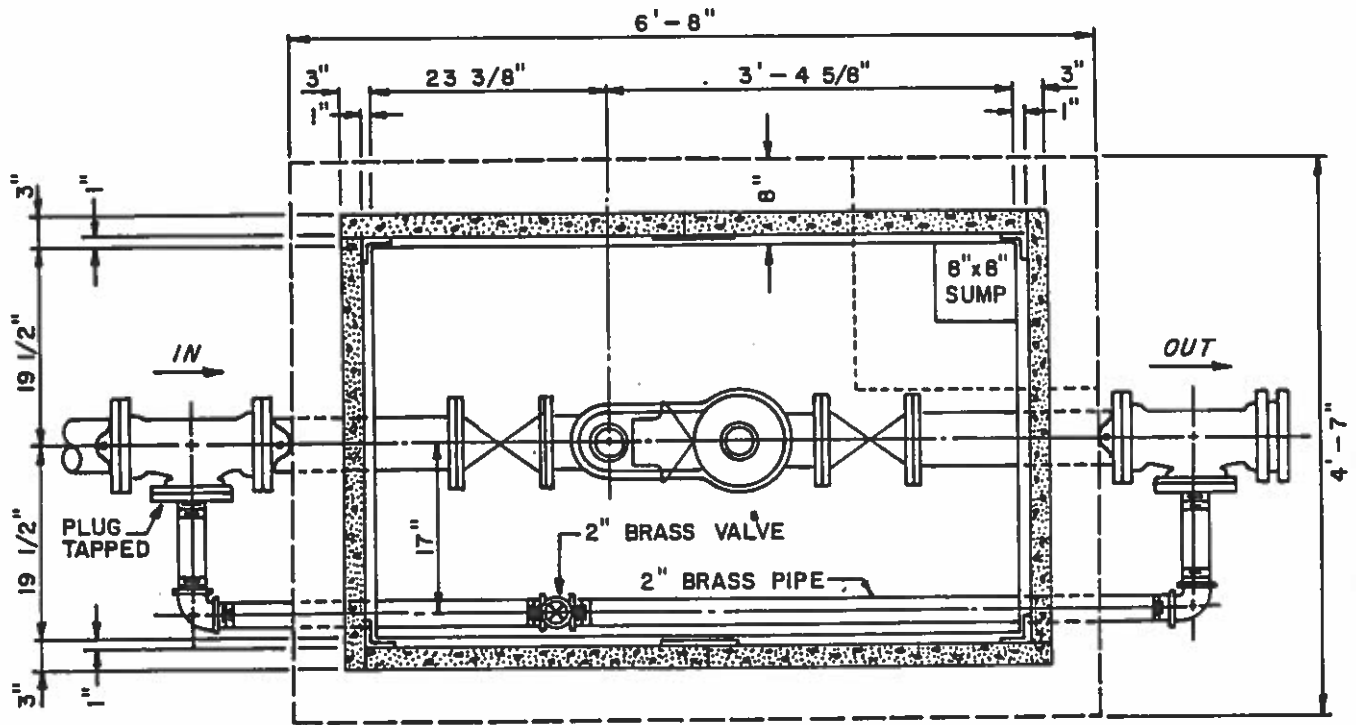
REVISIONS

4", 6", & 8" F.M. METER SETTING

DRWG. NO.

D-235

2 OF 2



COVER DETAIL

NOTE :  
SEE "STANDARD METER VAULT PARTS"  
DRWG. FOR METER VAULT DETAILS.

REVISIONS

4" COMPOUND METER SETTING

DRWG. NO.  
**D-240**  
1 OF 2



TYPE I (4" INLET AND 4" OUTLET)

QTY.

1 4" CT meter  
 2 4" FLGD. wheel valves  
 2 4" FLGD. x PE nipples  
 30" long  
 1 4" PE x PE nipple  
 approximately 24" long  
 2 4" x 3" MJ tees  
 2 3" MJ plugs tapped 2"  
 2 4" 45° MJ bends  
 7 4" retainer glands  
 1 4" MJ plug  
 10 2" brass pipe cut & threaded  
 by Contractor  
 1 2" brass gate valve  
 2 2" 90° brass elbows  
 4 4" FLGD. gaskets, asbestos  
 \*8 4" MJ gaskets  
 1 4" PE x PE nipple 24" min.  
 length  
 2 #7 covers  
 1 #8 cover  
 4 A sides  
 2 C sides  
 8 Angles  
 4 Plates  
 24 Bolts, nuts & washers;  
 1/2" x 3-1/2"  
 \*32 3/4" x 3-1/2" MJ nuts & bolts  
 575 Bricks  
 32 5/8" x 3" FLGD. nuts & bolts  
 \*8 5/8" x 3 MJ nuts & bolts  
 \*2 3" MJ gaskets  
 \*28 5/8" x 1-1/2" set screws for  
 retainer glands

TYPE II (6" INLET AND 6" OUTLET)

QTY. FROM TYPE I ELIMINATE

2 4" FLGD. x PE nipples 30" long  
 1 4" PE x PE nipple to reach  
 elev. of water main  
 2 4" x 3" MJ tees  
 2 4" 45° MJ bends  
 7 4" retainer glands  
 1 4" MJ plug  
 \*8 4" MJ gaskets  
 1 4" PE x PE nipple 24" min.  
 length  
 \*28 5/8" x 1-1/2" set screws for  
 retainer glands

ADD

2 6" x 4" FLGD. reducers  
 2 6" FLGD. x PE nipples 30" long  
 2 6" x 3" MJ tees  
 2 6" 45° MJ bends  
 2 6" FLGD. gaskets, asbestos  
 7 6" retainer glands  
 1 6" MJ plug  
 \*8 6" MJ gaskets  
 \*16 3/4" x 3-1/2" MJ nuts & bolts  
 16 3/4" x 3-1/2" FLGD. nuts & bolts  
 1 6" PE x PE nipple 24" min. length  
 1 6" PE x PE nipple approx. 24" long  
 \*42 5/8" x 2" set screws for retainer  
 glands

\*Above MJ gaskets, set screws, & MJ nuts & bolts  
 are supplied with respective MJ fittings.

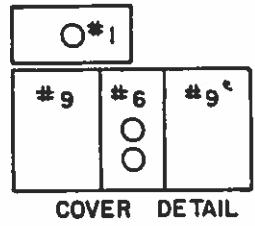
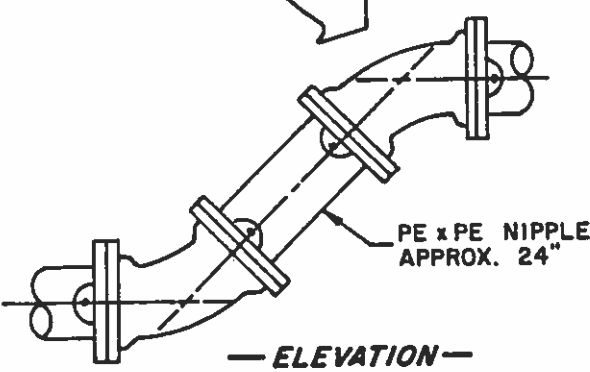
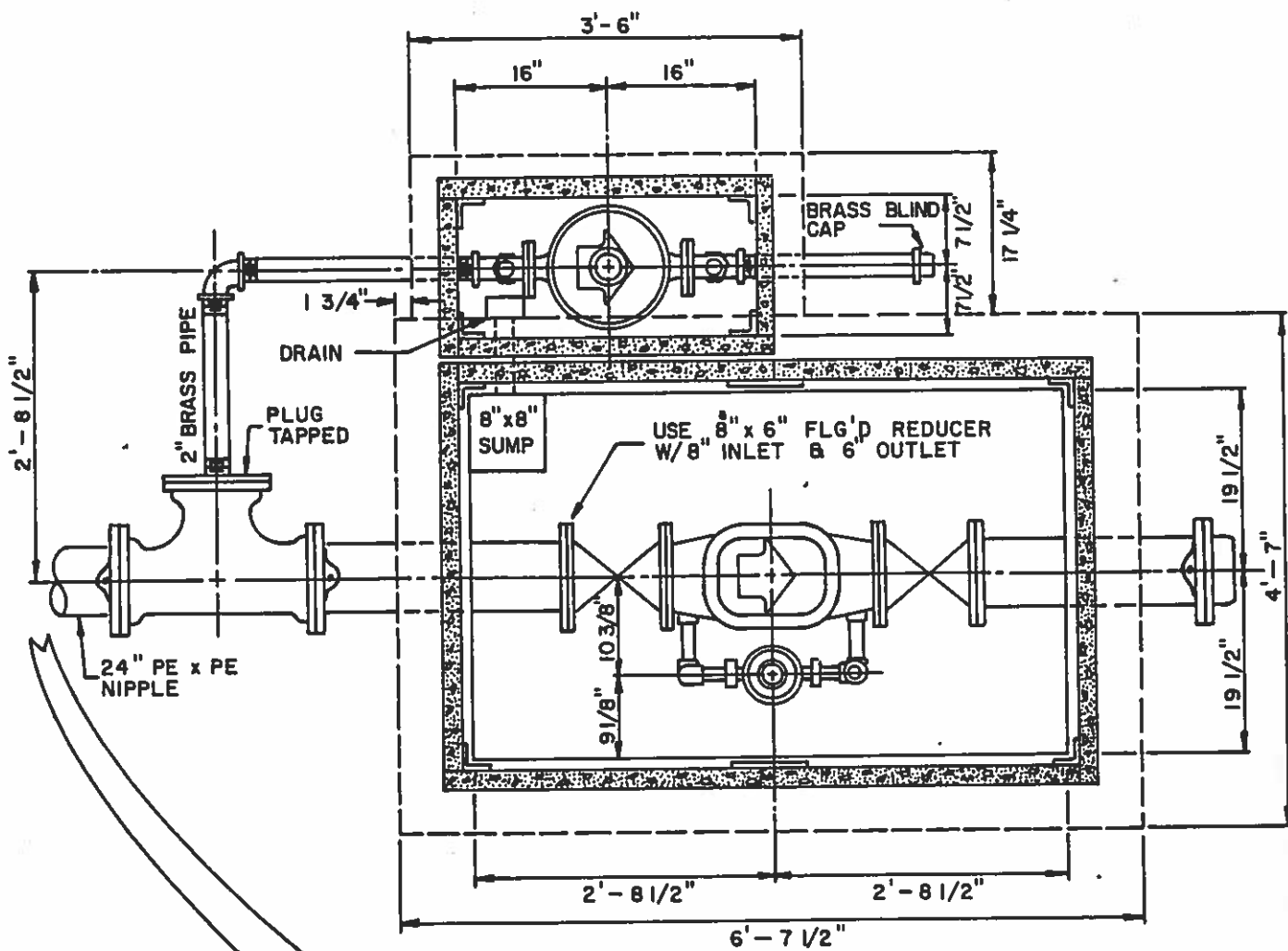
REVISIONS

MATERIALS LIST FOR  
 4" COMPOUND METER SETTING

DRWG. NO.

D-240

2 OF 2



NOTE:  
SEE "STANDARD METER VAULT PARTS"  
DRWG. FOR METER VAULT DETAILS.

REVISIONS	<h2 style="margin: 0;">1-1/2" OR 2" METER 6" DETECTOR CHECK SETTING</h2>	DRWG. NO. <h2 style="margin: 0;">D-245</h2> 1 OF 3
-----------	--	---

TYPE I 1-1/2" DISC METER, 6" DC  
(6" INLET) ( 6" OUTLET)  
(2" BRASS INLET & OUTLET)

TYPE II 1-1/2" DISC METER, 6" DC  
(8" INLET) (6" OUTLET)  
(2" BRASS INLET & OUTLET)

<u>QTY.</u>		<u>QTY.</u>	<u>ELIMINATE FROM TYPE I</u>
1	1-1/2" Disc meter with gaskets, bolts, and nuts	1	6" x 3" MJ tee
2	1-1/2" flanged angle valves	1	6" flanged x plain end nipple 30" long
3	2" brass elbows	2	6" 45° bends
10	2" brass pipe to be cut and threaded by Contractor	1	6" plain end x plain end nipple approximately 24" long
1	6" x 3" MJ tee	6	6" MJ retainer glands
1	3" MJ plug tapped 2"	1	6" plain end x plain end nipple 24" min. length
2	6" flanged x plain end nipples 30" long	*6	6" MJ gaskets
2	6" 45° MJ bends	*36	3/4" x 3-1/2" nuts & bolts for MJ connections
1	6" plain end x plain end nipple approximately 24" long		
1	6" plain end x plain end nipple 24" min. length		<u>ADD</u>
7	6" MJ retainer glands	1	8" x 3" MJ tee
1	6" MJ cap	1	8" flanged x plain end nipple 30" long
*7	6" MJ gaskets	2	8" 45° MJ bends
4	6" flanged gaskets, asbestos	1	8" plain end x plain end nipple approximately 24" long
2	6" flanged gate valves	6	8" MJ retainer glands
1	6" DC meter	1	8" plain end x plain end nipple 24" min. length
*42	3/4" x 3-1/2" nuts & bolts for MJ connections	*6	8" MJ gaskets
*4	5/8" x 3" nuts and bolts for MJ connections	*36	3/4" x 4" nuts & bolts for MJ connections
*42	5/8" x 2" set screws for retainer glands	1	8" x 6" flanged reducer
32	3/4" x 3-1/4" nuts & bolts for flange connections	8	3/4" x 3-1/2" nuts & bolts for flanged connections
1	#1 cover	1	8" flanged gasket, asbestos
1	#6 cover		
2	#9 covers		
6	A sides		
2	B sides		
2	C sides		
16	Angles		
4	Plates		
40	Bolts, nuts & washers, 1/2" x 3-1/2"		
625	Bricks		

\*Above MJ gaskets, set screws, and MJ nuts & bolts are supplied with respective fittings.

REVISIONS	<b>MATERIALS LIST FOR 1-1/2" OR 2" METER          6" DETECTOR CHECK SETTING</b>	<b>DRWG. NO.          D-245          2 OF 3</b>
-----------	---	---

TYPE III 2" DISC METER, 6" DC  
(6" INLET) (6" OUTLET)  
(2" BRASS INLET & OUTLET)

QTY.      FROM TYPE I ELIMINATE  
 1            1-1/2" disc meter with  
               gaskets, bolts, and nuts

ADD

1            2" disc meter with  
               gaskets, bolts, and nuts

QTY.      FROM TYPE I ELIMINATE  
 2            1-1/2" FLGD. angle valves

ADD

2            2" FLGD. angle valves

TYPE IV 2" DISC METER 6" DC  
(8" INLET) (6" OUTLET)  
(2" BRASS INLET & OUTLET)

QTY.      FROM TYPE II ELIMINATE  
 1            1-1/2" disc meter with  
               gaskets, bolts, and nuts

ADD

1            2" disc meter with  
               gaskets, bolts, and nuts

QTY.      FROM TYPE II ELIMINATE  
 2            1-1/2" FLGD. angle valves

ADD

2            2" FLGD. angle valves

\*Above MJ gaskets, set screws, & MJ nuts & bolts  
 are supplied with respective fittings.

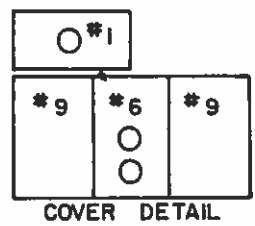
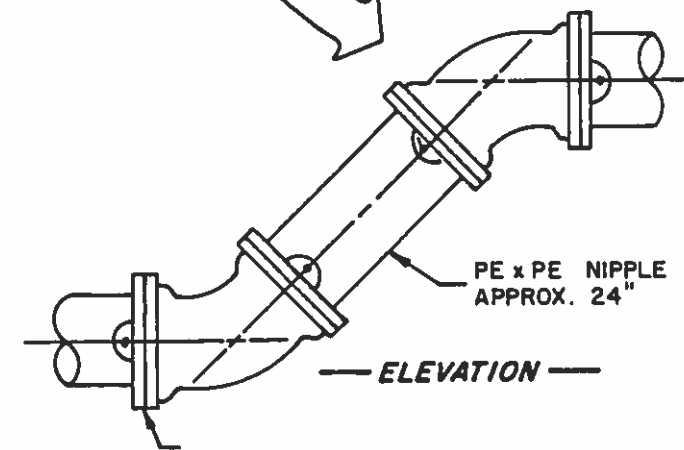
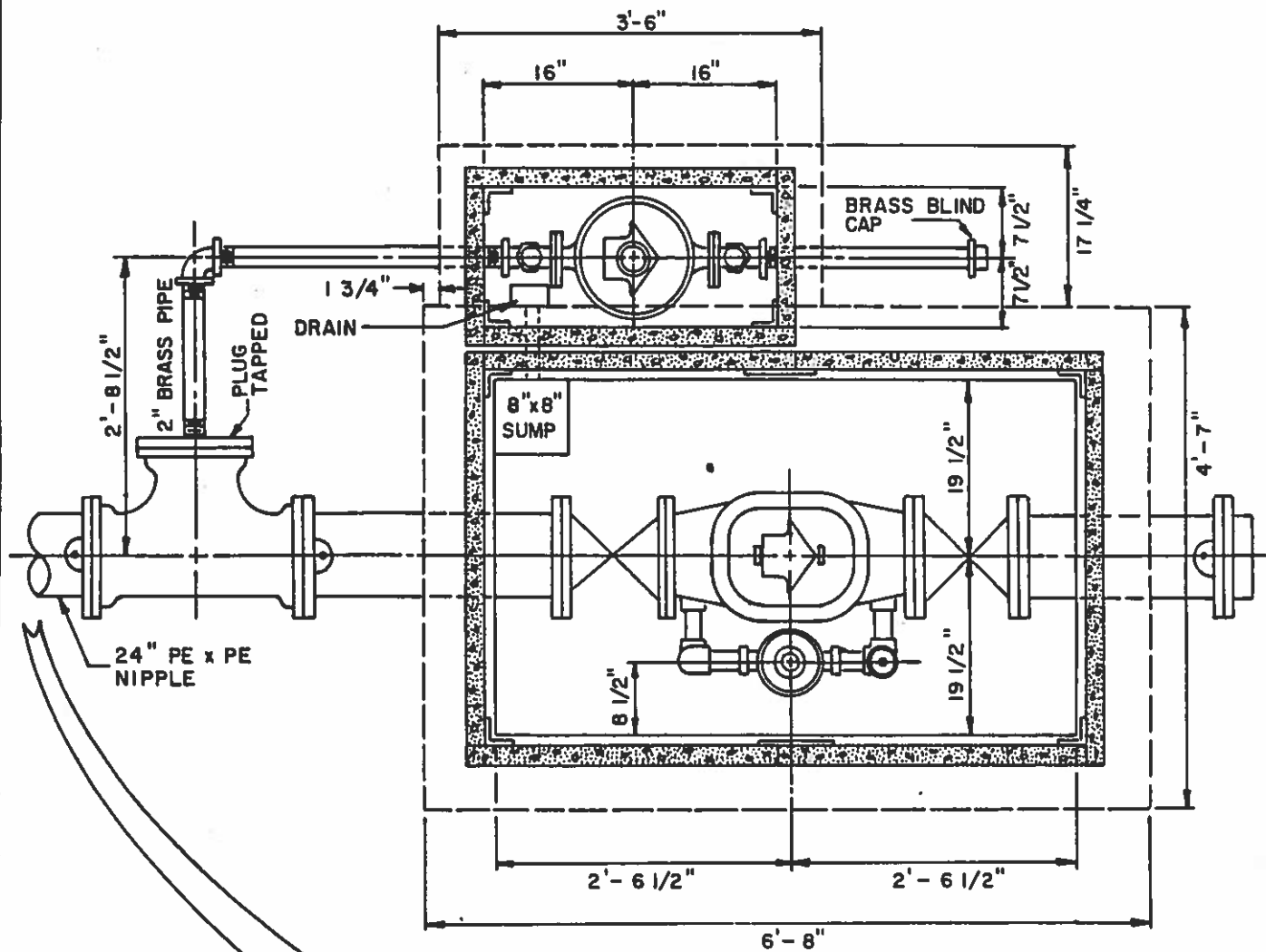
REVISIONS

MATERIALS LIST FOR 1-1/2" OR 2" METER  
 6" DETECTOR CHECK SETTING

DRWG. NO.

D-245

3 OF 3



NOTE :  
SEE "STANDARD METER VAULT PARTS"  
DRWG. FOR METER VAULT DETAILS.

REVISIONS

1-1/2" OR 2" METER  
8" DETECTOR CHECK SETTING

DRWG. NO.  
**D-250**  
1 OF 2

TYPE I 1-1/2" DISC METER, 8" DC  
(8" INLET) (8" OUTLET)  
(2" BRASS INLET & OUTLET)

TYPE II 2" DISC METER 8" DC  
(8" INLET) (8" OUTLET)  
(2" BRASS INLET & OUTLET)

QTY.

1 1-1/2" Disc Meter with gaskets, bolts, and nuts  
 2 1-1/2" flanged angle valves  
 3 2" brass elbows  
 10 2" brass pipe to be cut & threaded by contractor  
 1 8 x 3 MJ tee  
 1 3" MJ plug tapped 2"  
 1 8" DC meter  
 2 8" flanged gate valves  
 2 8" flanged x plain end nipples 30" long  
 2 8" 45° MJ bends  
 1 8" plain end x plain end nipple approximately 24" long  
 1 8" plain end x plain end nipple 24" min. length  
 1 8" MJ cap  
 7 8" retainer glands  
 \*7 8" MJ gaskets  
 4 8" flange gaskets, asbestos  
 32 3/4" x 3-1/2" nuts and bolts for flange connections  
 \*42 5/8" x 2" set screws for retainer glands  
 \*4 5/8" x 3" nuts and bolts for MJ connections  
 \*42 3/4" x 4" nuts & bolts for MJ connections  
 1 #1 cover  
 1 #6 cover  
 2 #9 covers  
 6 A sides  
 2 B sides  
 2 C sides  
 16 Angles  
 4 Plates  
 40 Nuts, bolts, and washers, 1/2" x 3-1/2"  
 625 Bricks

QTY. ELIMINATE FROM TYPE I

1 1-1/2" Disc meter with gaskets, nuts, and bolts  
 2 1-1/2" FLGD. angle valves

ADD

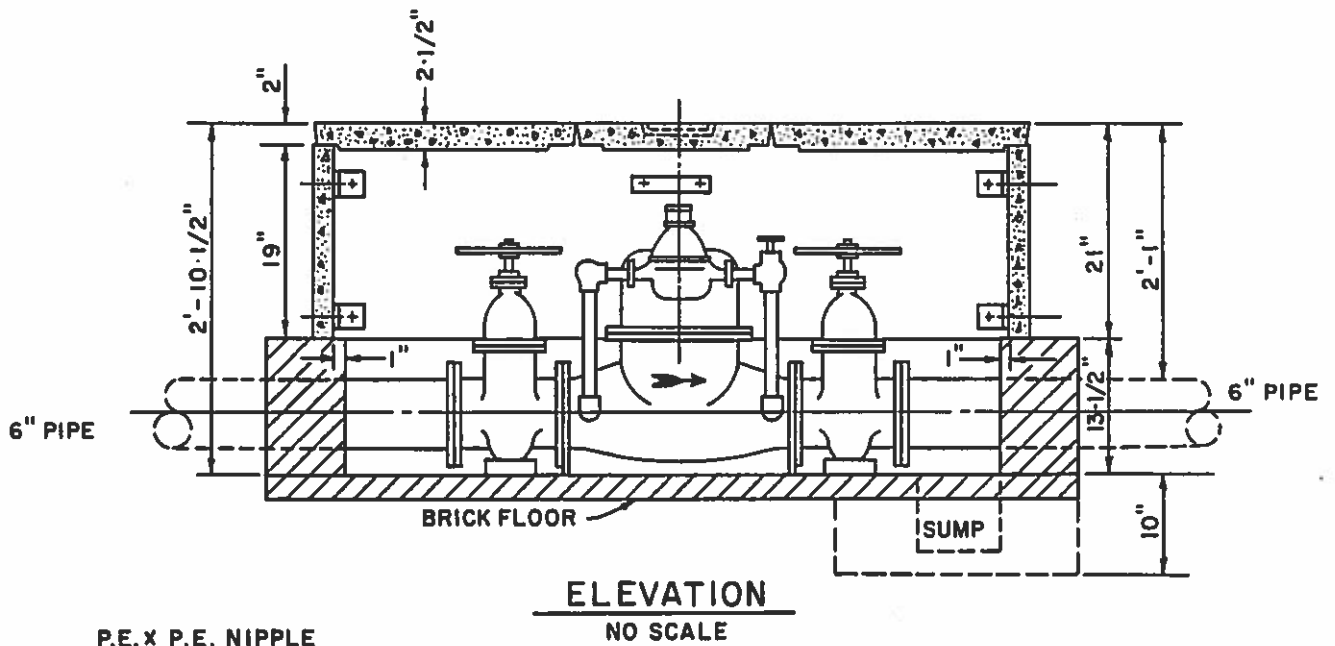
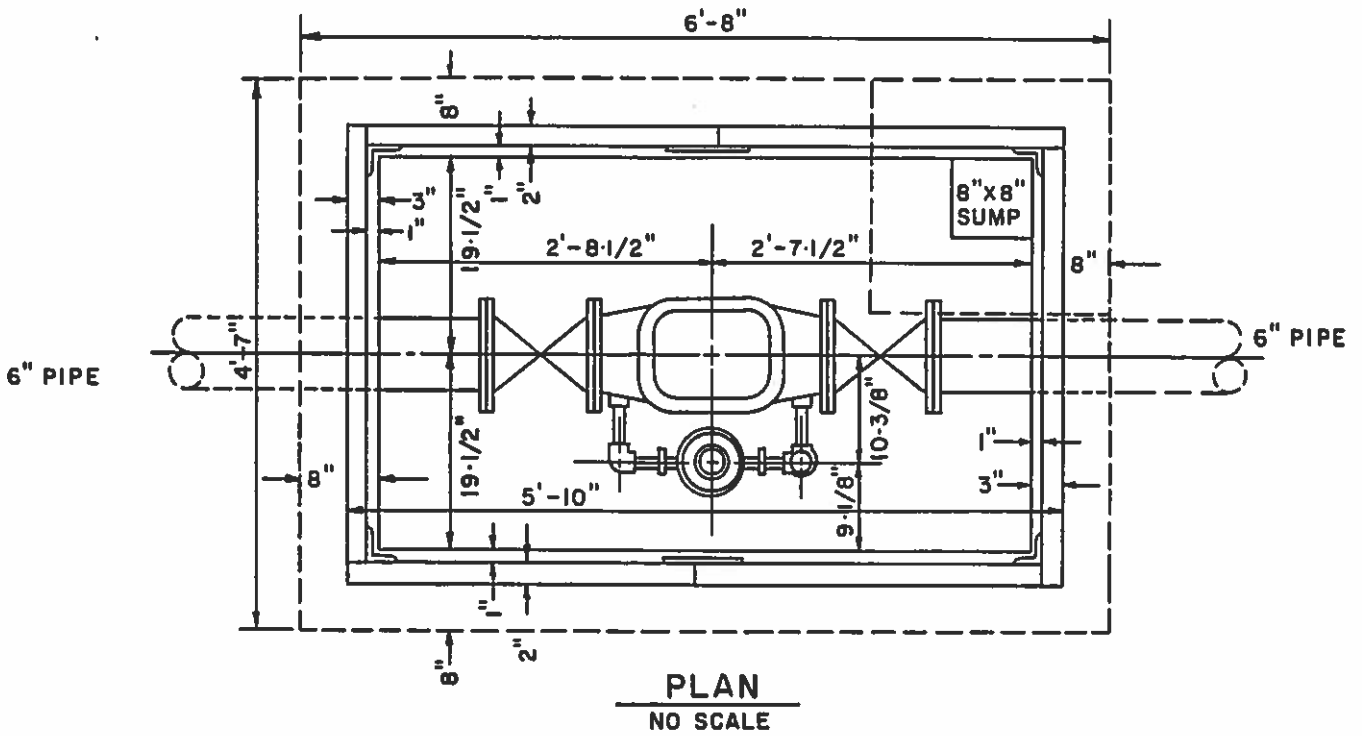
1 2" disc meter with gaskets, nuts, and bolts  
 2 2" FLGD. angle valves

\*Above MJ gaskets, set screws, & MJ nuts and bolts are supplied with respective MJ fittings.

REVISIONS

MATERIALS LIST FOR 1-1/2" OR 2" METER  
 8" DETECTOR CHECK SETTING

DRWG. NO.  
 D-250  
 2 OF 2



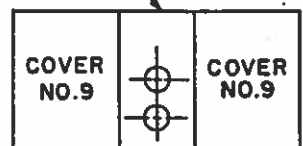
P.E. X P.E. NIPPLE  
APPROX. 24" LENGTH



7 RETAINER  
GLANDS REQ'D.

NOTE: SEE "STANDARD METER VAULT  
PARTS" DRAWING FOR METER  
VAULT DETAILS.

COVER NO. 6



REVISIONS

6" DETECTOR CHECK

DRWG. NO.

D-255

1 OF 2

QTY.

2 6" flanged x plain end  
nipples 30" long  
2 6" 45° MJ bends  
1 6" plain end x plain end nipple  
approximately 24" long  
  
1 6" plain end x plain end nipple  
24" min. length  
7 6" MJ retainer glands  
1 6" MJ cap  
\*7 6" MJ gaskets  
4 6" flanged gaskets, asbestos  
2 6" flanged gate valves  
1 6" DC meter  
  
\*42 3/4" x 3-1/2" nuts & bolts for MJ  
connections  
\*4 5/8" x 3" nuts and bolts for MJ  
connections  
\*42 5/8" x 2" set screws for retainer  
glands  
32 3/4" x 3-1/4" nuts & bolts for  
flange connections  
1 #1 Cover  
1 #6 Cover  
2 #9 Covers  
6 A Sides  
2 B Sides  
2 C Sides  
16 Angles  
4 Plates  
40 Bolts, nuts & washers,  
1/2" x 3-1/2"  
625 Bricks

\*Above MJ gaskets, set screws, and MJ nuts & bolts  
are supplied with respective fittings.

REVISIONS

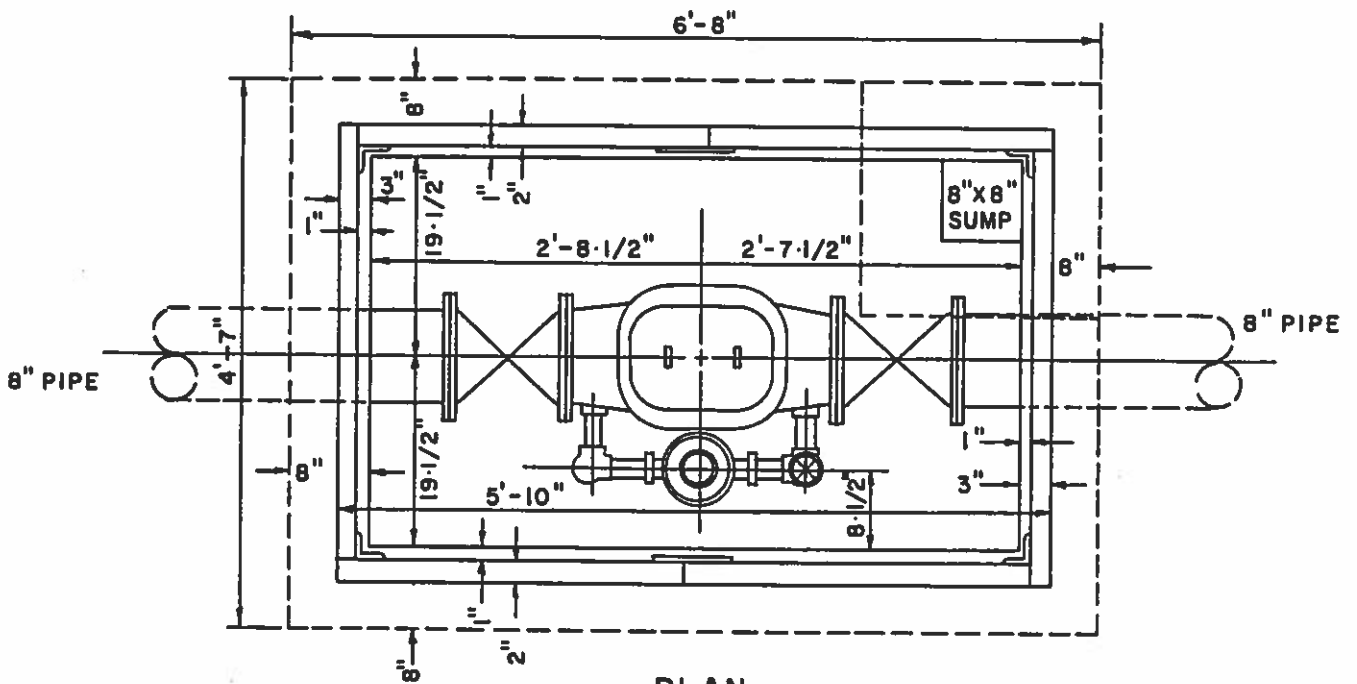
MATERIALS LIST FOR  
6" DETECTOR CHECK

DRWG. NO.

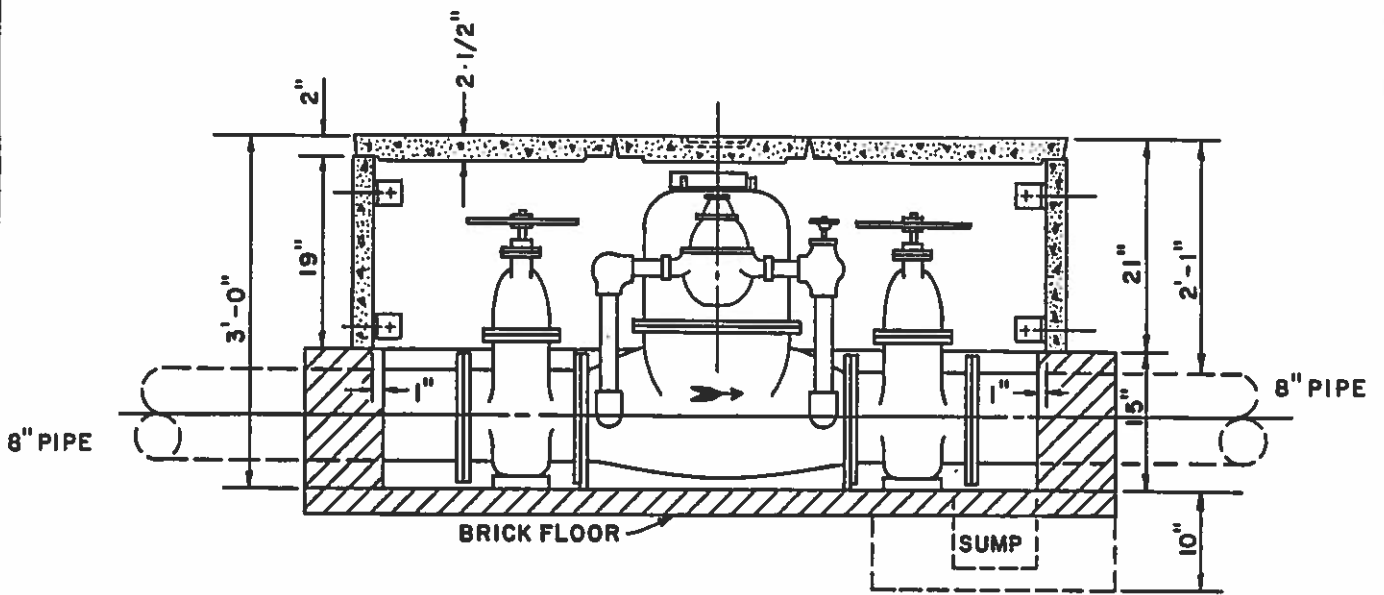
D-255

2 OF 2



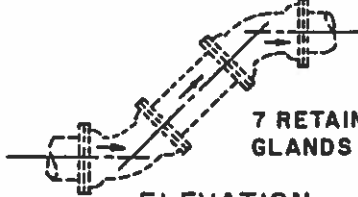


**PLAN**  
NO SCALE



**ELEVATION**  
NO SCALE

P.E.X P.E. NIPPLE  
APPROX. 24" LENGTH

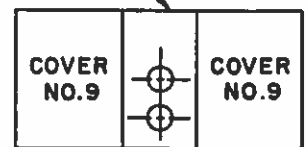


7 RETAINER  
GLANDS REQ'D.

**ELEVATION**  
NO SCALE

NOTE: SEE "STANDARD METER VAULT  
PARTS" DRAWING FOR METER  
VAULT DETAILS.

COVER NO. 6



**ROOF PLAN**  
NO SCALE

REVISIONS

**8" DETECTOR CHECK**

DRWG. NO.

**D-260**

1 OF 2

QTY.

1 8" DC meter  
2 8" flanged gate valves  
2 8" flanged x plain end nipples  
30" long  
2 8" 45° MJ bends  
1 8" plain end x plain end nipple  
approximately 24" long  
1 8" plain end x plain end nipple  
24" min. length  
1 8" MJ cap  
7 8" retainer glands  
\*7 8" MJ gaskets  
4 8" flange gaskets, asbestos  
32 3/4" x 3-1/2" nuts & bolts for  
flange connections  
\*42 5/8" x 2" set screws for retainer  
glands  
\*4 5/8" x 3" nuts and bolts for MJ  
connections  
\*42 3/4" x 4" nuts & bolts for MJ  
connections  
1 #1 Cover  
1 #6 Cover  
2 #9 Covers  
6 A Sides  
2 B Sides  
2 C Sides  
16 Angles  
4 Plates  
40 Nuts, bolts & washers, 1/2" x 3-1/2"  
625 Bricks

\*Above MJ gaskets, set screws & MJ nuts & bolts  
are supplied with respective MJ fittings.

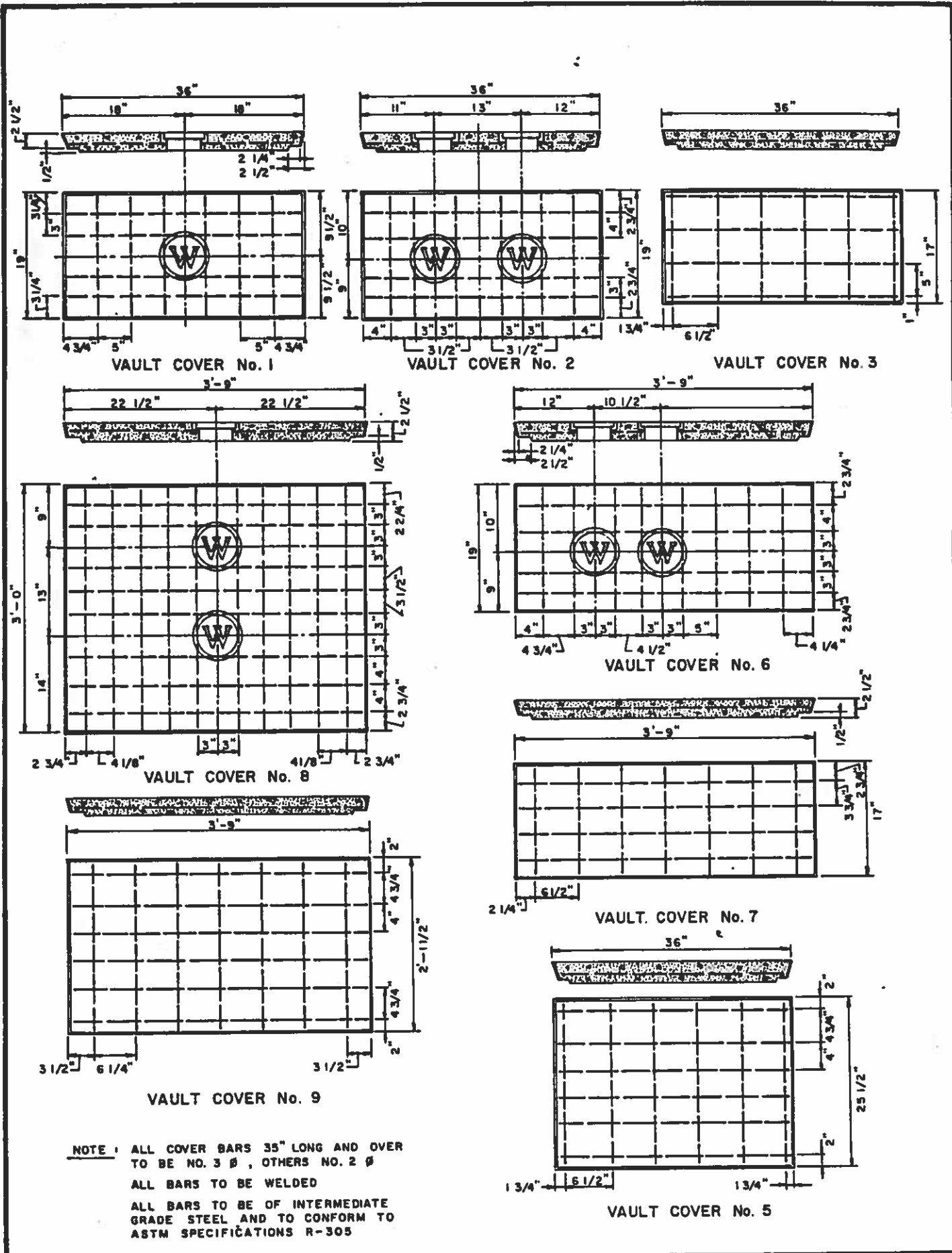
REVISIONS

MATERIALS LIST FOR  
8" DETECTOR CHECK

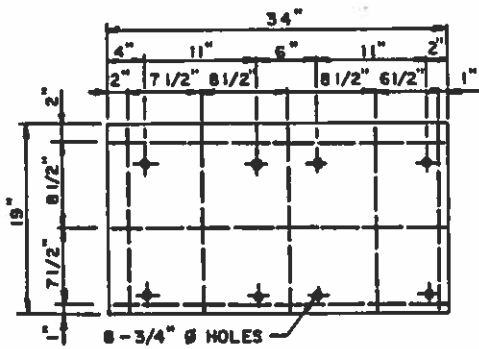
DRWG. NO.

D-260

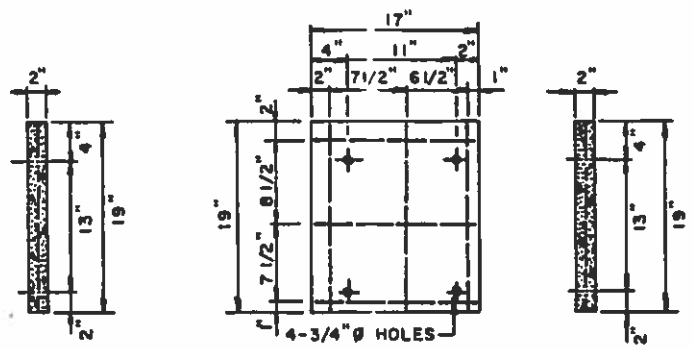
2 OF 2



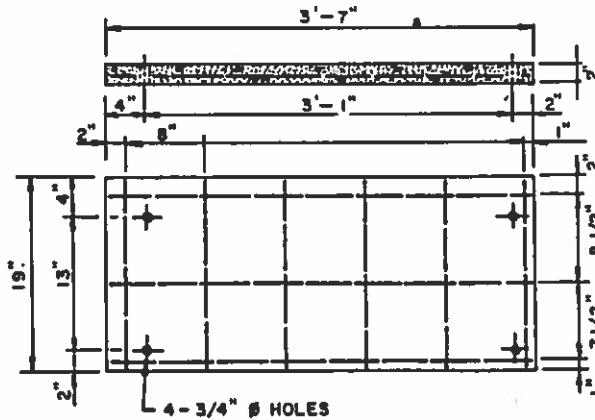
**NOTE :** ALL COVER BARS 35" LONG AND OVER TO BE NO. 3  $\phi$ , OTHERS NO. 2  $\phi$   
 ALL BARS TO BE WELDED  
 ALL BARS TO BE OF INTERMEDIATE GRADE STEEL AND TO CONFORM TO ASTM SPECIFICATIONS R-305



SIDE PIECE "A"

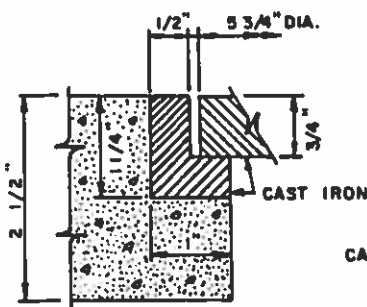


SIDE PIECE "B"

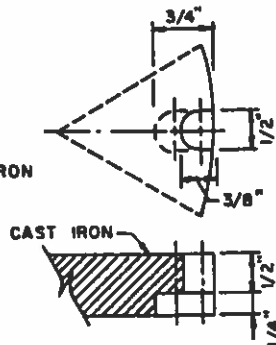


SIDE PIECE "C"

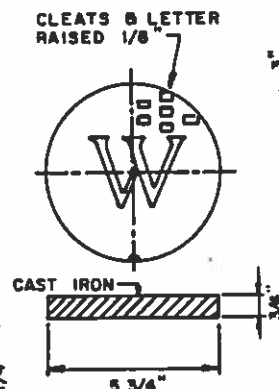
NOTE : ALL BARS TO BE NO. 2  $\Phi$   
 ALL BARS TO BE WELDED  
 ALL BARS TO BE INTER-MEDIATE GRADE STEEL  
 AND TO CONFORM TO ASTM SPECIFICATIONS R-305



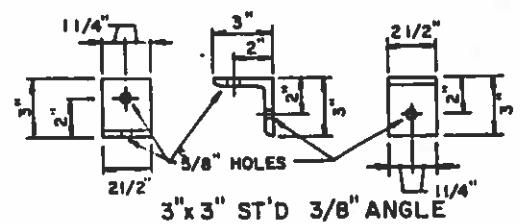
SECTION THRU RING & LID



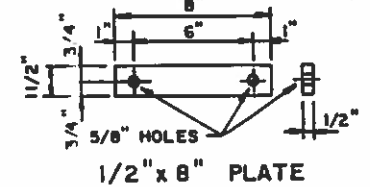
SECTION THRU RIM



D.P.U. TOP



3" x 3" ST'D 3/8" ANGLE



1/2" x 8" PLATE



GALVANIZED 1/2" x 3 1/2" BOLT

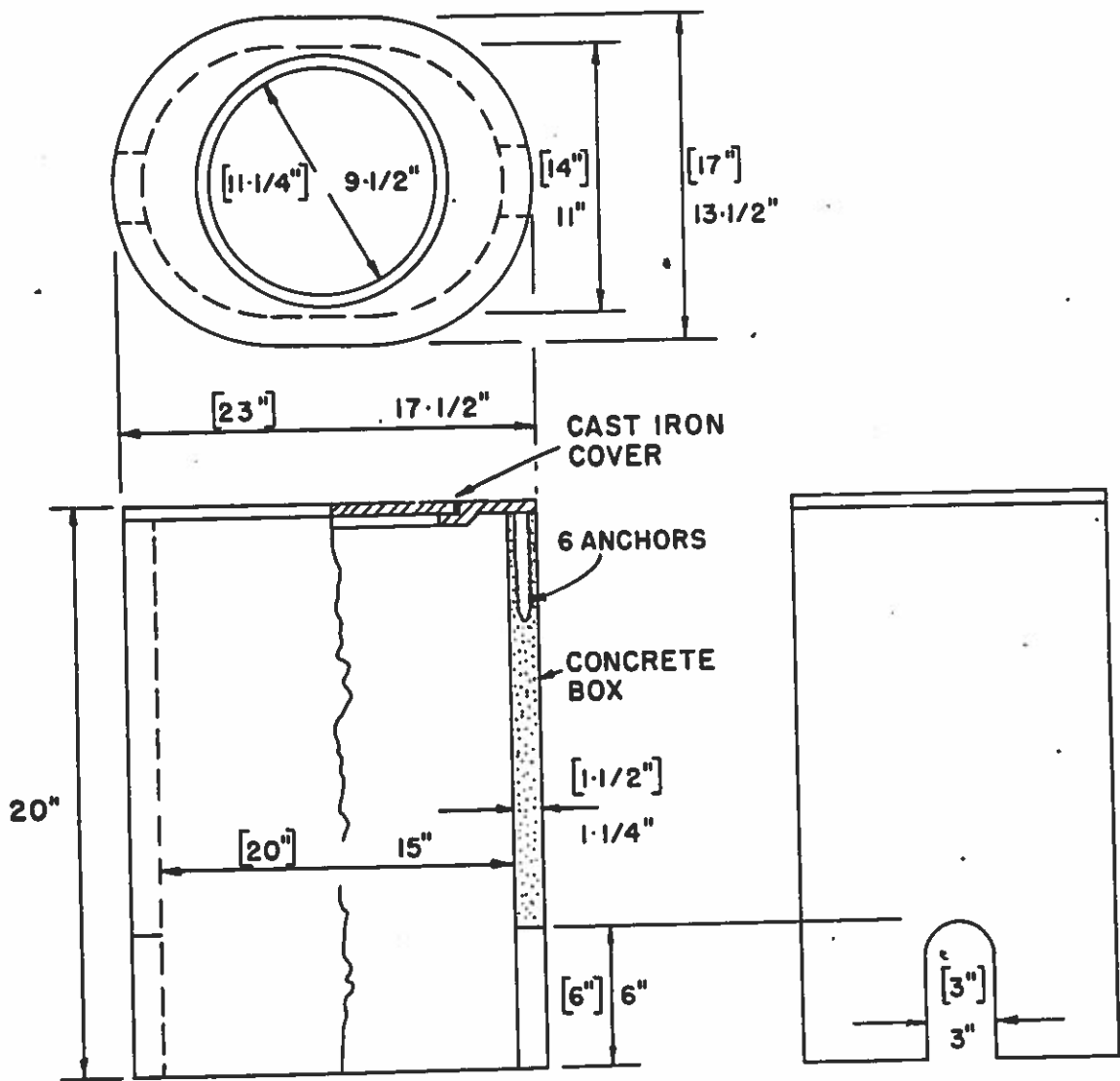
REVISIONS

STANDARD METER VAULT PARTS

DRWG. NO.

D-265

2 OF 2

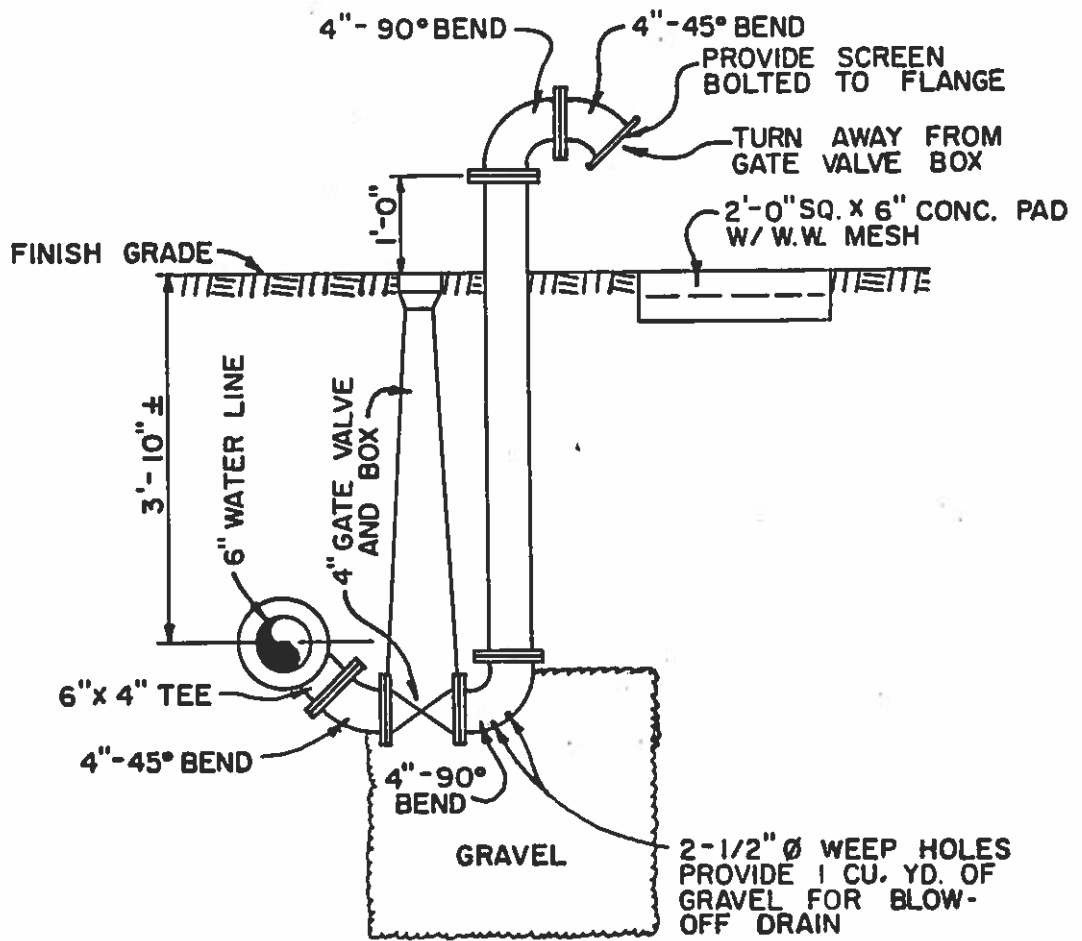


NOTE: [ ] = DIMENSIONS FOR 1" BOX  
 OTHER DIMENSIONS FOR 3/4" X 5/8" BOX

REVISIONS  
 3/87

IRONCRETE METER BOX

DRWG. NO.  
 D-270



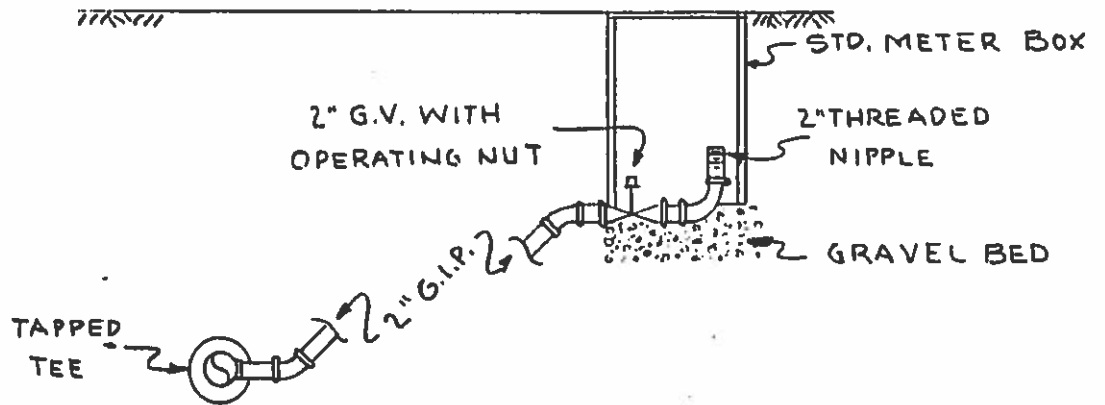
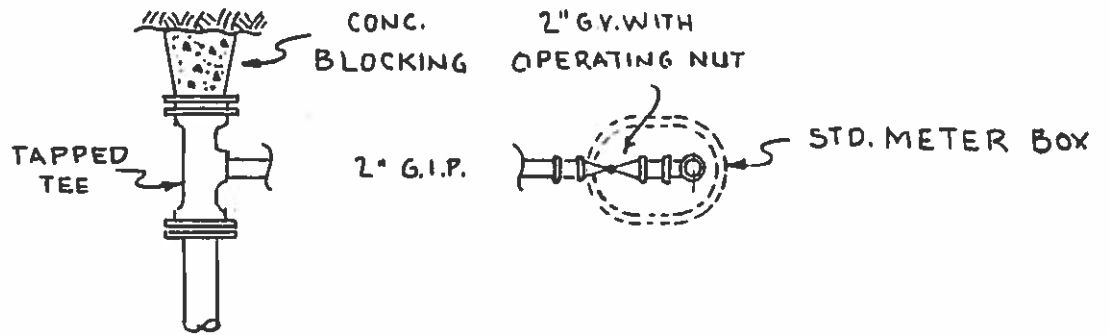
ELEVATION

NOTE: ALL FITTINGS FOR BLOW-OFF SHALL BE FLANGED.

REVISIONS
-----------

DETAILS - BLOW-OFF
--------------------

DRWG. NO. D-275
--------------------

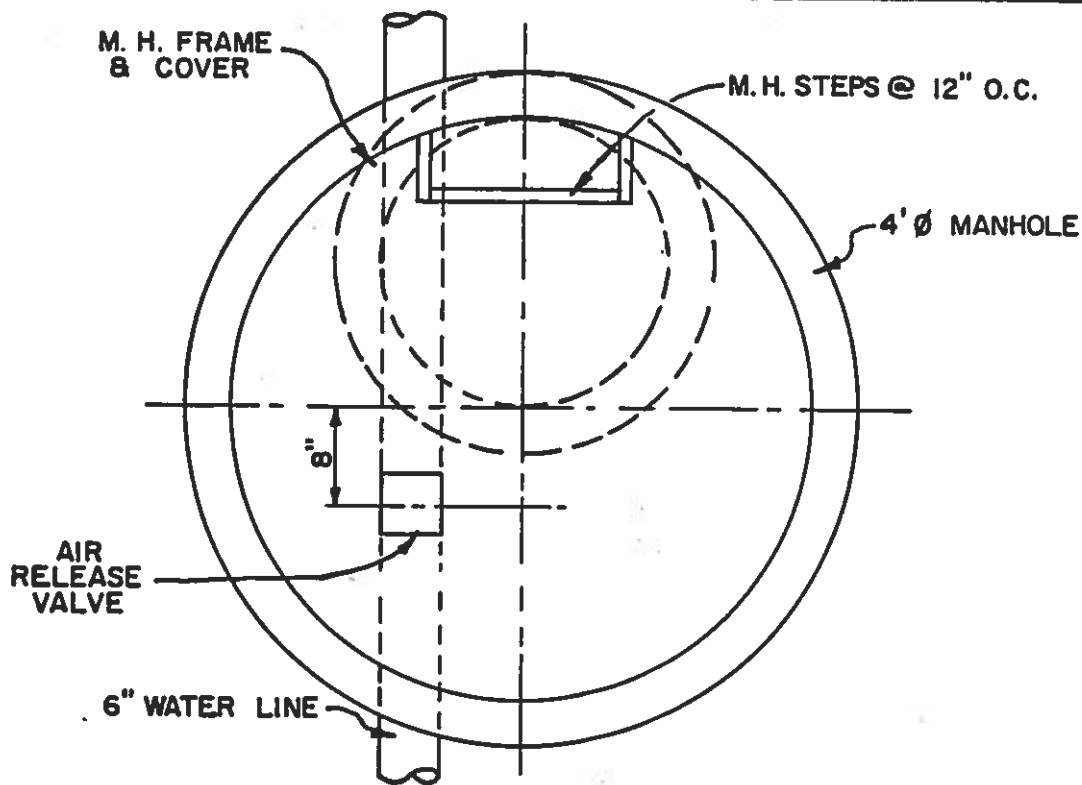


REVISIONS

DETAILS - 2" BLOW-OFF

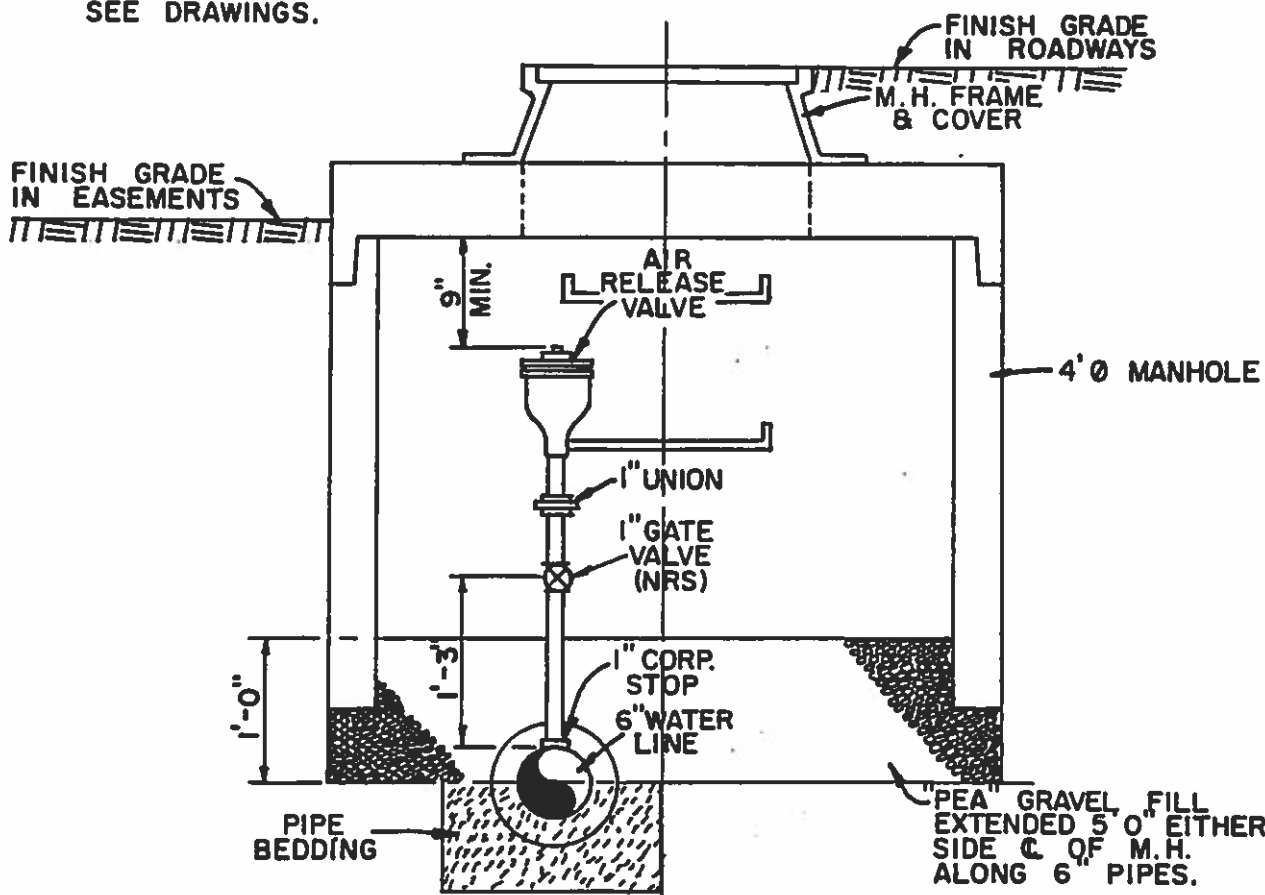
DRWG. NO.

D-275 T



PLAN

NOTE: FOR ORIFICE SIZE OF AIR RELEASE VALVES SEE DRAWINGS.



ELEVATION

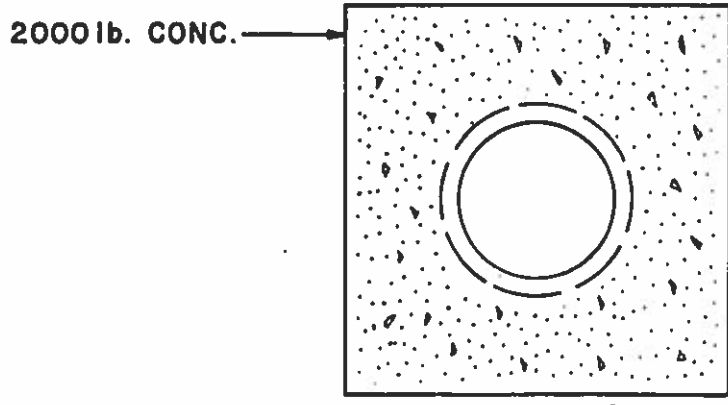
REVISIONS

AIR RELEASE VALVE MANHOLE

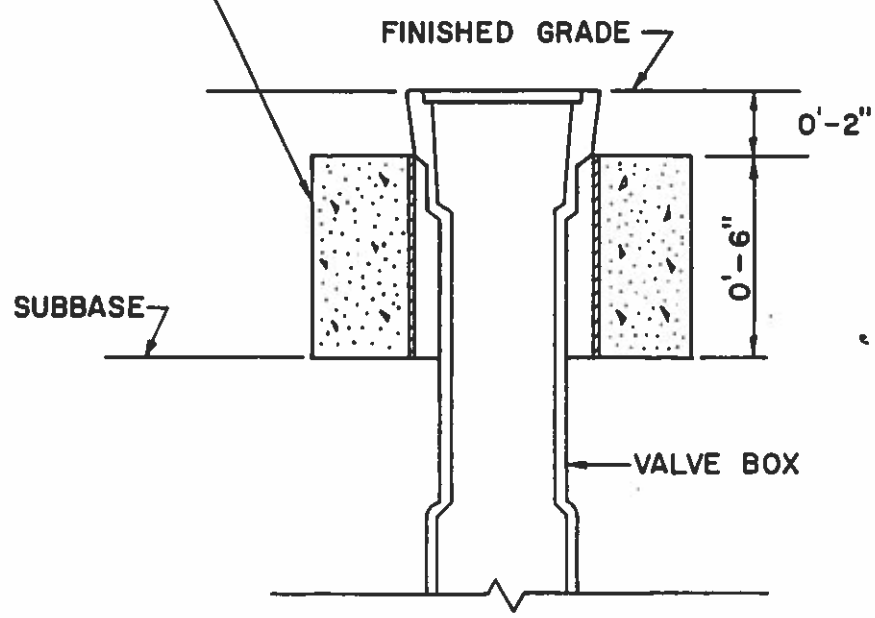
DRWG. NO.

D-276





CONCRETE POURED AROUND SLEEVE SO THAT VALVE BOX IS FREE FOR ADJUSTMENTS

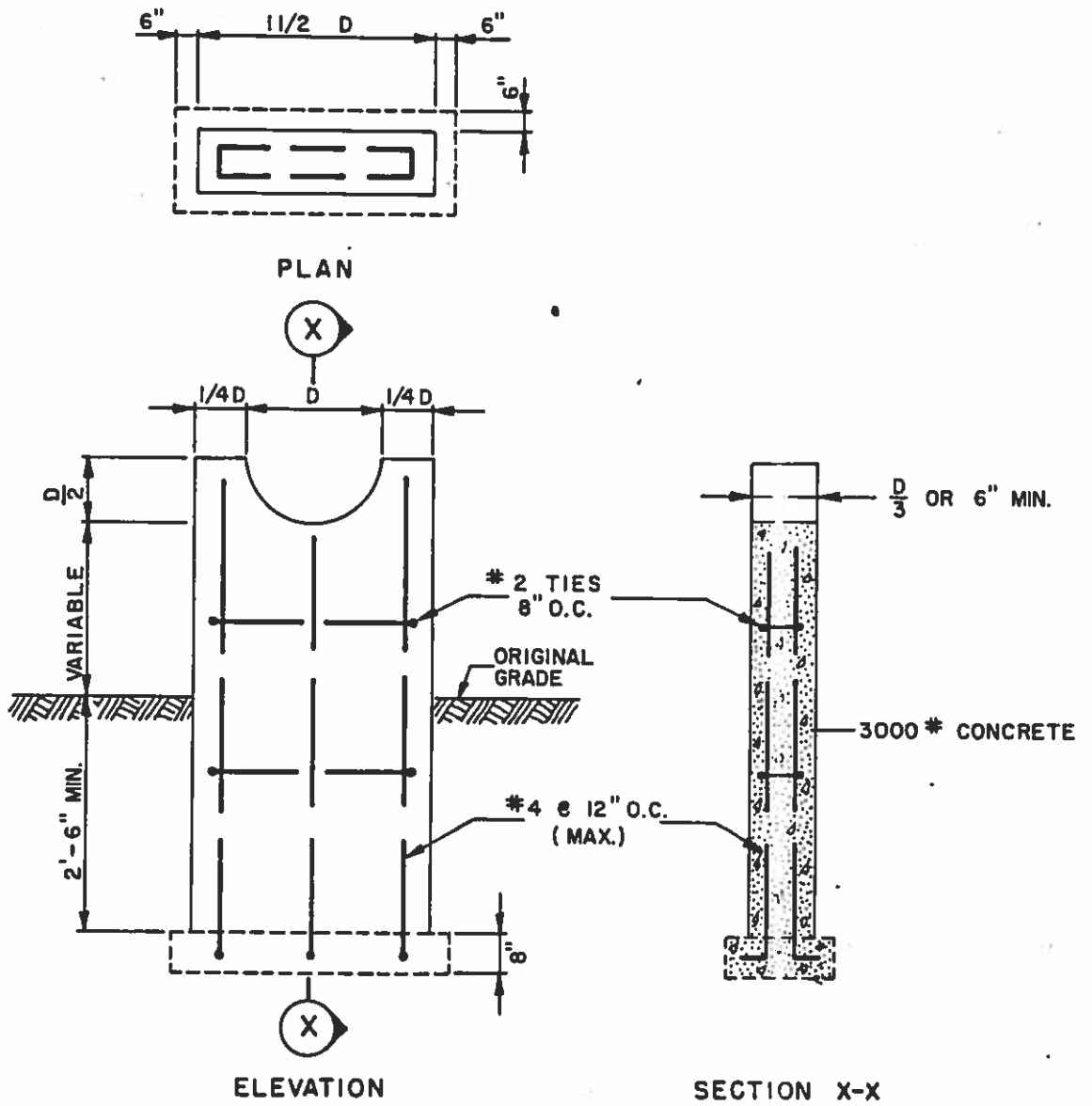


REVISIONS

VALVE BOX DETAIL

DRWG. NO.

D-300

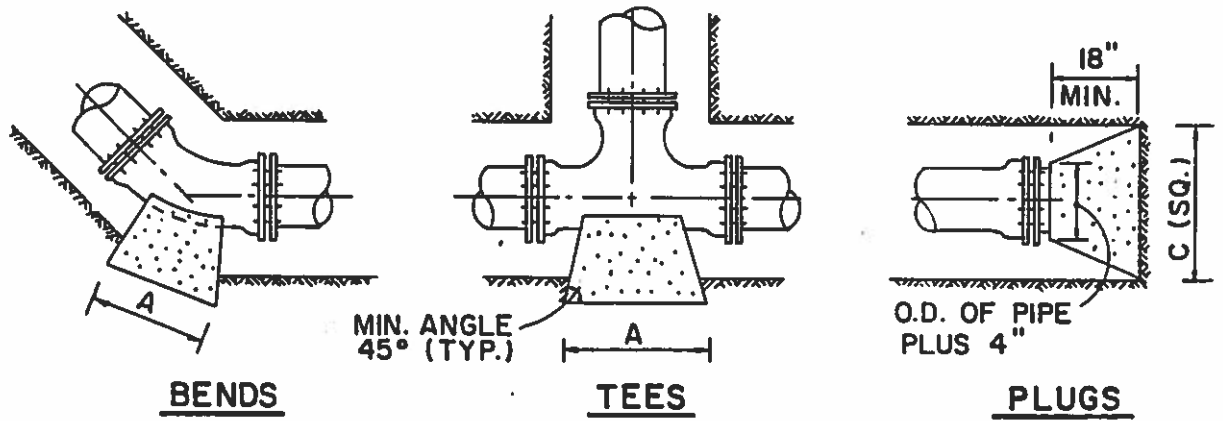


REVISIONS

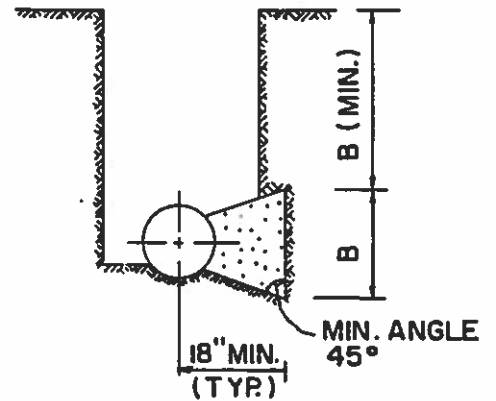
STANDARD PIPE PEDESTAL

DRWG. NO.

D-325

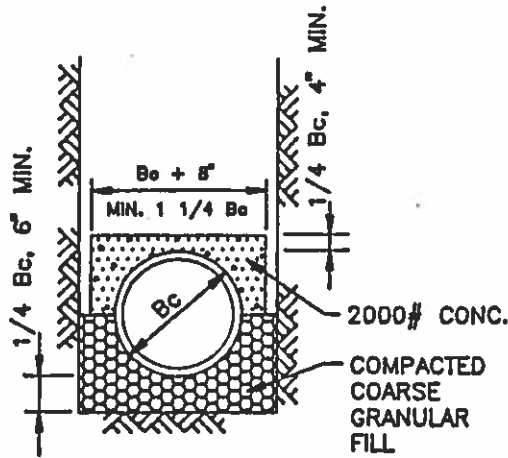


- 1 ALL CONCRETE SHALL BE 3000 P.S.I. COMPRESSIVE STRENGTH AT 28 DAYS.
- 2 ALL BEARING SURFACES OF THRUST BLOCKS SHALL BE POURED AGAINST UNDISTURBED EARTH.
- 3 PROVIDE FELT PAPER BETWEEN THRUST BLOCKS AND PIPE FITTINGS.

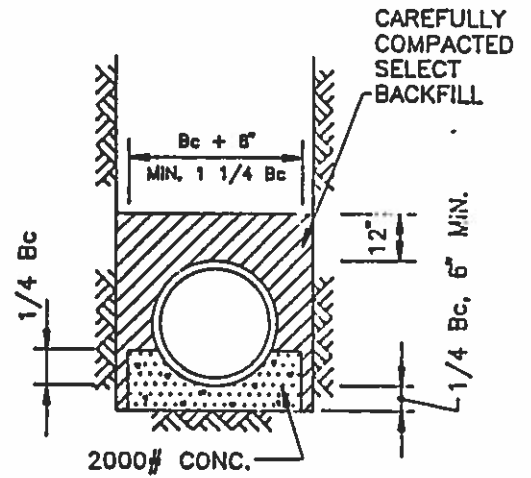


PIPE SIZE	11 1/4° BEND		22 1/2° BEND		45° BEND		90° BEND		PLUG C
	A	B	A	B	A	B	A	B	

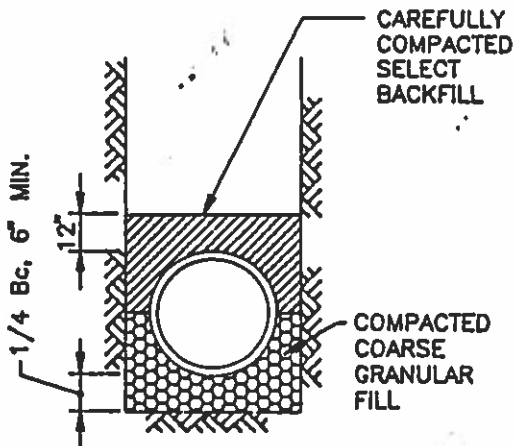
$B_c = \text{O.D. OF PIPE}$



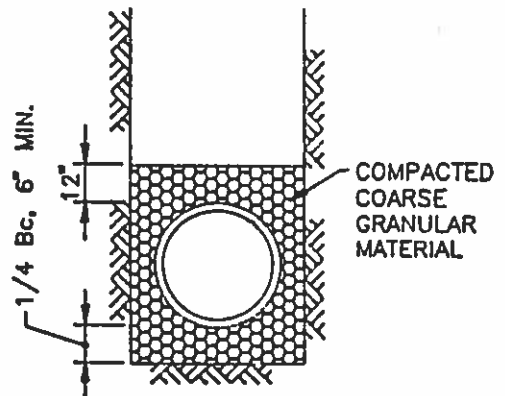
**CLASS "A" BEDDING**  
LOAD FACTOR = 2.8



**CLASS "A-1" BEDDING**  
LOAD FACTOR = 2.8



**CLASS "B" BEDDING**  
LOAD FACTOR = 1.9



**CLASS "B-1" BEDDING**  
LOAD FACTOR = 1.9

NOTE: IN ROCK TRENCH, EXCAVATE AT LEAST 6" BELOW THE BOTTOM OF THE PIPE.

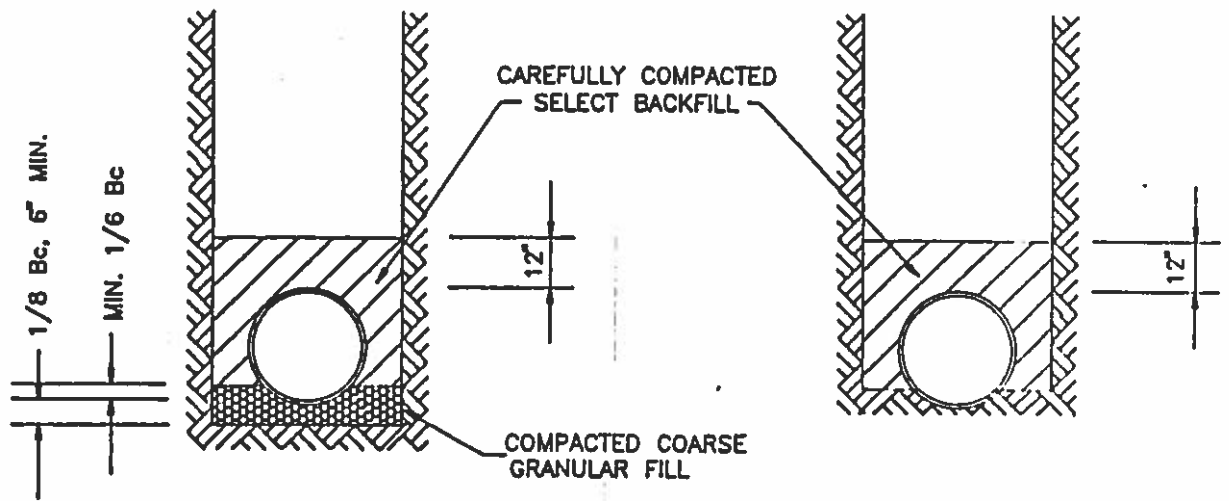
REVISIONS

TRENCH BEDDING - I

DRAWING N

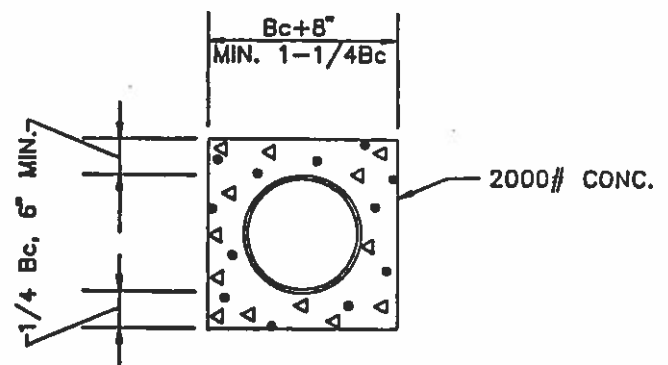
D-350

Bc = O.D. OF PIPE



CLASS "C" BEDDING  
LOAD FACTOR = 1.5

CLASS "C-1" BEDDING  
LOAD FACTOR = 1.5



CONCRETE ENCASEMENT  
LOAD FACTOR = 4.5

NOTE: IN ROCK TRENCH, EXCAVATE AT LEAST  
6" BELOW THE BOTTOM OF THE PIPE.

REVISIONS

# TRENCH BEDDING - II

DRAWING

D-35